



copulsepoll.org

The Colorado Health Foundation Poll

2021 Survey



Survey Methodology

- 2,493 interviews with adult Colorado residents
- Interviews conducted July 27 - August 16, 2021 in English and Spanish
- Interviews online, landlines and cell phones
 - Online respondents contacted by email and postcards
- Oversamples of Black/African American, Native American and Asian American Coloradans, as well as in Pueblo County
 - Data weighted to reflect the true demographic and geographic composition of the Colorado adult population
- Margin of sampling error of +/-2.7% at the 95% confidence level
- Some percentages may not sum to 100% due to rounding
- Bipartisan research team of FM3 Research (D) and New Bridge Strategy (R)



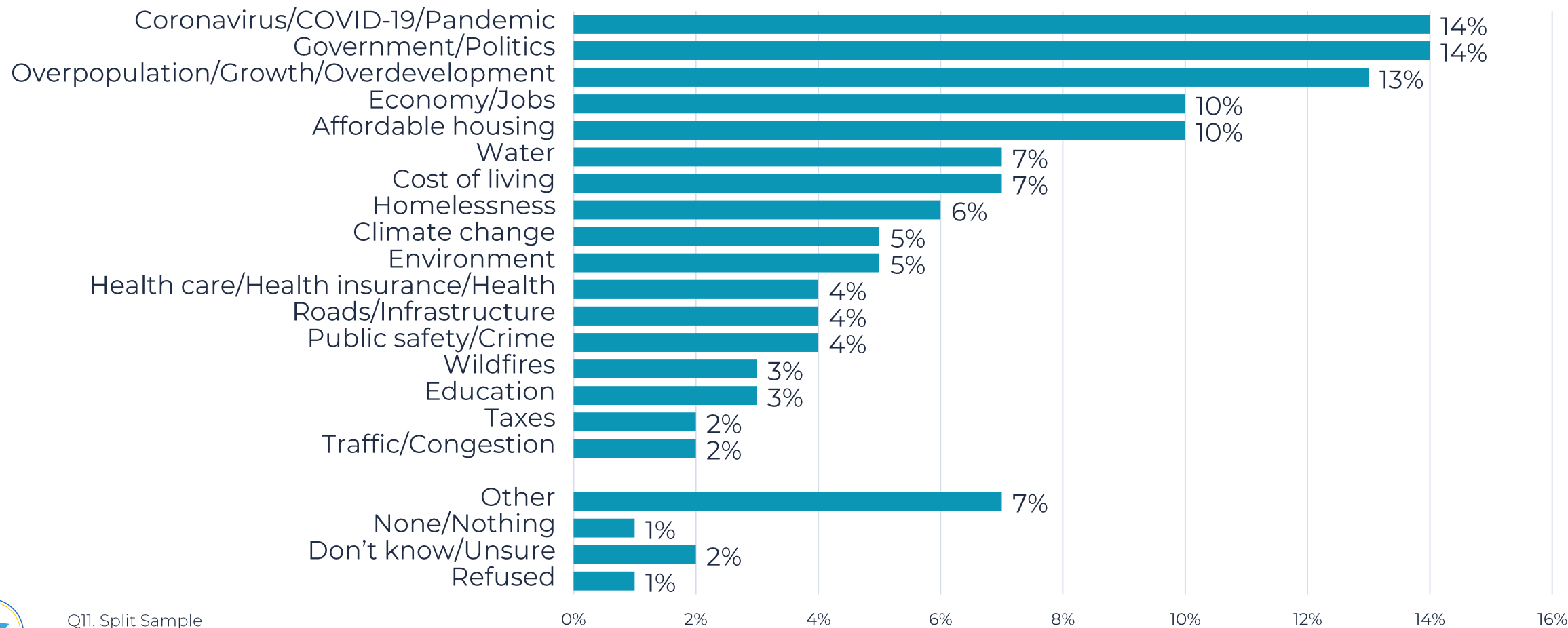
A photograph of a group of people in a meeting, with a dark blue overlay. The text 'Top Concerns' is written in white, bold font across the center. In the foreground, a person's hands are visible, writing in a notebook with a pen. Other people are seated around a table in the background, some looking towards the camera and others looking away. The overall atmosphere is professional and collaborative.

Top Concerns

Coloradans name COVID, growth and government and politics as the biggest concerns facing the state.

In a few words of your own, what is the most important issue facing Colorado right now?

(Open-ended; Responses 2% and Above Shown, n=1,213)



A Sampling of Respondent Perspectives on the Most Important Issue Facing Colorado

In a few words of your own, what is the most important issue facing Colorado right now?

(Open-ended; n=1,168)

"Making a living wage where I can afford things by myself and not have to depend on a roommate."

"Drought conditions are continuing to worsen over the years due to overpopulation."

"Divided political opinions and understandings of what is the truth and what are facts on many issues. Not sharing concrete facts and perspectives on what is the truth impedes solving problems together."

"Same as elsewhere -- getting everyone vaccinated from COVID."

"Crime and safety."

"The population boom; population experiencing homelessness."

"Climate change, wildfires and protection of public land."

"Returning to normal after COVID-19 is under control again."

"Forced vaccinations and threat of lockdowns."

"Over-taxation."

"Gun and police violence."

"Water apportionment -- percentage of CO water used in CO vs Colorado river water going to western states."

"The Californication of Colorado. Those in power are ruining this state with trying to turn it into California version 2."

"Pressure towards socialism -- loss of traditional freedoms"

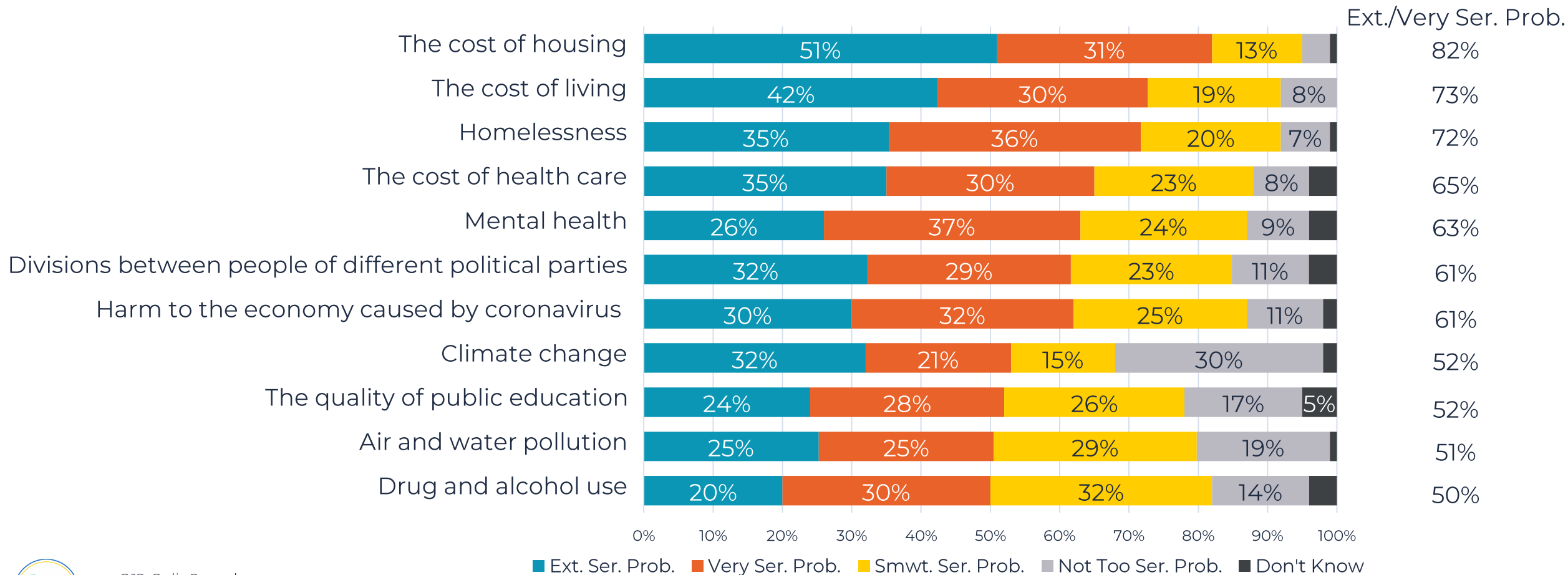
"Disparity of wealth and cost of housing/homelessness."

"Good school environments."



When asked to rate their concern with a wider range of issues, the cost of housing, homelessness and health care costs emerge as major concerns.

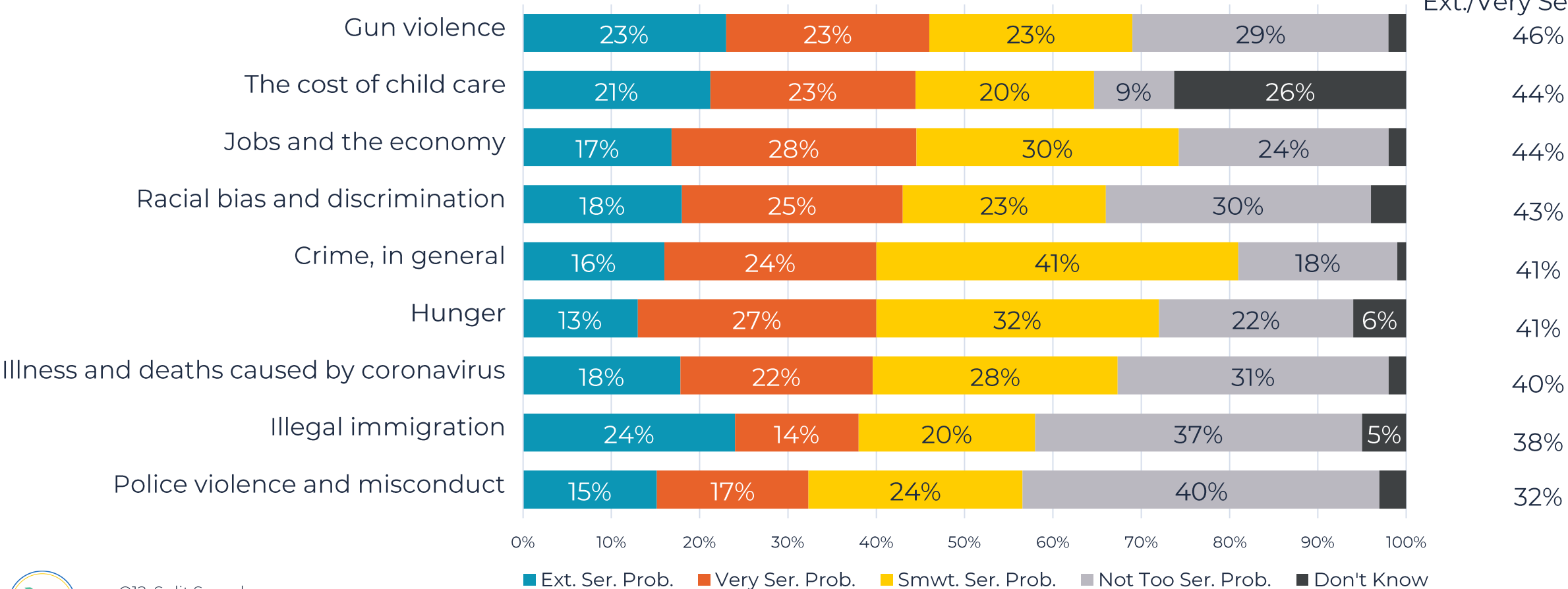
I'd like to read you some problems facing Colorado that people have mentioned. Please tell me whether you think it is an extremely serious problem, a very serious problem, somewhat serious problem or not too serious a problem in Colorado.



The cost of child care is a concern for nearly half of Coloradans – more than jobs or crime.

I'd like to read you some problems facing Colorado that people have mentioned. Please tell me whether you think it is an extremely serious problem, a very serious problem, somewhat serious problem or not too serious a problem in Colorado.

Ext./Very Ser. Prob.



Compared to last year, concerns about COVID and the economy have receded while concerns over the cost of living – and particularly housing – have increased.

I'd like to read you some problems facing Colorado that people have mentioned. Please tell me whether you think it is an extremely serious problem, a very serious problem, somewhat serious problem or not too serious a problem in Colorado.

(% Extremely/Very Serious Problem)

Problem	2020	2021	Difference
The cost of housing	67%	82%	+15%
The cost of living	63%	73%	+10%
Air and water pollution	41%	51%	+10%
Climate change	44%	52%	+8%
Mental health	55%	63%	+8%
Drug and alcohol use	45%	50%	+5%
Homelessness	67%	72%	+5%
Hunger	39%	41%	+2%
Racial bias and discrimination	42%	43%	+1%
Illness and deaths caused by coronavirus	43%	40%	-3%
The quality of public education	57%	52%	-5%
Police violence and misconduct	38%	32%	-6%
Harm to the economy caused by coronavirus	74%	61%	-13%
Jobs and the economy	63%	44%	-19%



There are some notable differences by race and ethnicity in the level of public concern about major issues.

I'd like to read you some problems facing Colorado that people have mentioned. Please tell me whether you think it is an extremely serious problem, a very serious problem, somewhat serious problem or not too serious a problem in Colorado.

(% Extremely/Very Serious Problem)

Problem	All	Race/Ethnicity					
		White	Black/ African American	Asian/ Pacific Islander	Hispanic/ Latinx	Native American	All People of Color
The cost of housing	82%	83%	84%	75%	83%	93%	80%
The cost of living	73%	67%	81%	78%	83%	69%	82%
Homelessness	72%	69%	78%	66%	80%	76%	77%
The cost of health care	65%	61%	74%	75%	72%	73%	73%
Mental health	63%	62%	69%	60%	67%	63%	66%
Divisions between people of different political parties	61%	65%	51%	48%	52%	46%	52%
Harm to the economy caused by coronavirus	61%	59%	60%	69%	68%	67%	67%
Climate change	52%	51%	62%	79%	61%	65%	61%
The quality of public education	52%	48%	47%	50%	57%	57%	55%
Air and water pollution	51%	47%	47%	65%	63%	65%	60%
Drug and alcohol use	50%	46%	52%	51%	65%	66%	58%
Gun violence	46%	43%	54%	70%	56%	63%	55%
The cost of child care	44%	41%	46%	54%	48%	61%	50%
Jobs and the economy	44%	42%	50%	35%	46%	60%	47%
Racial bias and discrimination	43%	40%	52%	51%	54%	66%	52%
Crime, in general	41%	35%	38%	45%	51%	72%	49%
Hunger	41%	35%	37%	60%	59%	52%	53%
Illness and deaths caused by coronavirus	40%	36%	61%	56%	51%	52%	52%
Illegal immigration	38%	35%	30%	23%	38%	52%	37%
Police violence and misconduct	32%	29%	43%	52%	44%	50%	44%



Coloradans with lower incomes express more acute concerns about a wide range of issues.

I'd like to read you some problems facing Colorado that people have mentioned. Please tell me whether you think it is an extremely serious problem, a very serious problem, somewhat serious problem or not too serious a problem in Colorado.

(% Extremely/Very Serious Problem)

Problem	All	Household Income				
		<\$30,000	\$30,000-\$50,000	\$50,000-\$75,000	\$75,000-\$100,000	\$100,000+
The cost of housing	82%	84%	88%	90%	77%	79%
The cost of living	73%	76%	81%	74%	72%	67%
Homelessness	72%	76%	74%	74%	69%	69%
The cost of health care	65%	73%	71%	68%	63%	58%
Mental health	63%	62%	67%	67%	66%	60%
Divisions between people of different political parties	61%	54%	56%	59%	63%	63%
Harm to the economy caused by coronavirus	61%	68%	64%	64%	51%	62%
Climate change	52%	60%	62%	43%	48%	59%
The quality of public education	52%	68%	53%	53%	45%	43%
Air and water pollution	51%	55%	53%	53%	50%	47%
Drug and alcohol use	50%	65%	60%	50%	51%	41%
Gun violence	46%	54%	54%	47%	49%	39%
The cost of child care	44%	43%	50%	55%	42%	42%
Jobs and the economy	44%	54%	57%	50%	31%	36%
Racial bias and discrimination	43%	46%	38%	44%	47%	41%
Crime, in general	41%	47%	42%	39%	35%	34%
Hunger	41%	57%	49%	39%	47%	34%
Illness and deaths caused by coronavirus	40%	55%	43%	30%	41%	39%
Illegal immigration	38%	36%	33%	33%	32%	35%
Police violence and misconduct	32%	48%	45%	23%	30%	31%



There are deep partisan divisions on concern about climate change, immigration, police misconduct and health impacts from the coronavirus.

I'd like to read you some problems facing Colorado that people have mentioned. Please tell me whether you think it is an extremely serious problem, a very serious problem, somewhat serious problem or not too serious a problem in Colorado.

(% Extremely/Very Serious Problem)

Problem	All	Party			Dem - Rep Diff.
		Democrats	Independents	Republicans	
The cost of housing	82%	87%	81%	79%	+8%
The cost of living	73%	79%	72%	64%	+15%
Homelessness	72%	79%	68%	66%	+13%
The cost of health care	65%	76%	64%	53%	+23%
Mental health	63%	70%	63%	57%	+13%
Divisions between people of different political parties	61%	60%	66%	61%	-1%
Harm to the economy caused by coronavirus	61%	64%	59%	63%	+1%
Climate change	52%	82%	52%	18%	+64%
The quality of public education	52%	50%	53%	45%	+5%
Air and water pollution	51%	67%	54%	27%	+40%
Drug and alcohol use	50%	56%	45%	48%	+8%
Gun violence	46%	69%	46%	23%	+46%
The cost of child care	44%	55%	46%	29%	+26%
Jobs and the economy	44%	45%	42%	43%	+2%
Racial bias and discrimination	43%	60%	44%	27%	+33%
Crime, in general	41%	38%	40%	40%	-2%
Hunger	41%	51%	41%	27%	+24%
Illness and deaths caused by coronavirus	40%	64%	34%	20%	+44%
Illegal immigration	38%	17%	38%	62%	-45%
Police violence and misconduct	32%	55%	26%	14%	+41%

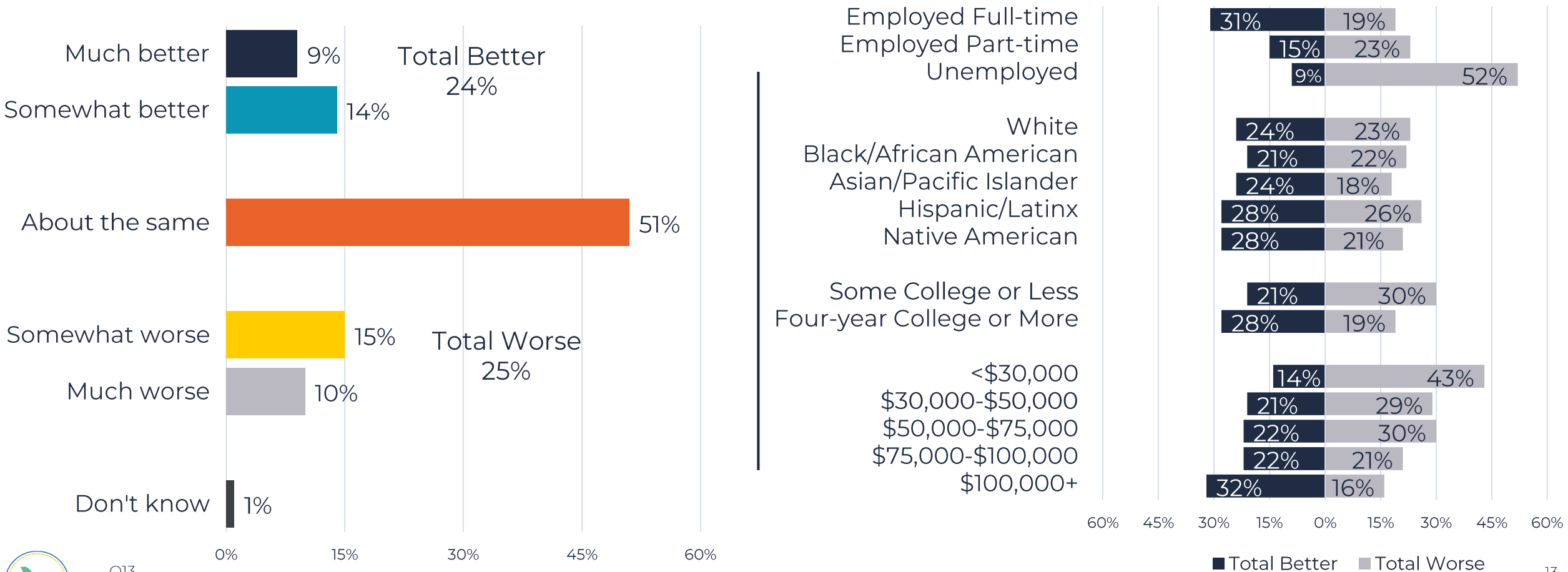


A group of people are seated around a table in a meeting. One person in the foreground is writing in a notebook. The scene is dimly lit with a blue tint. The text "Financial Security" is overlaid in the center.

Financial Security

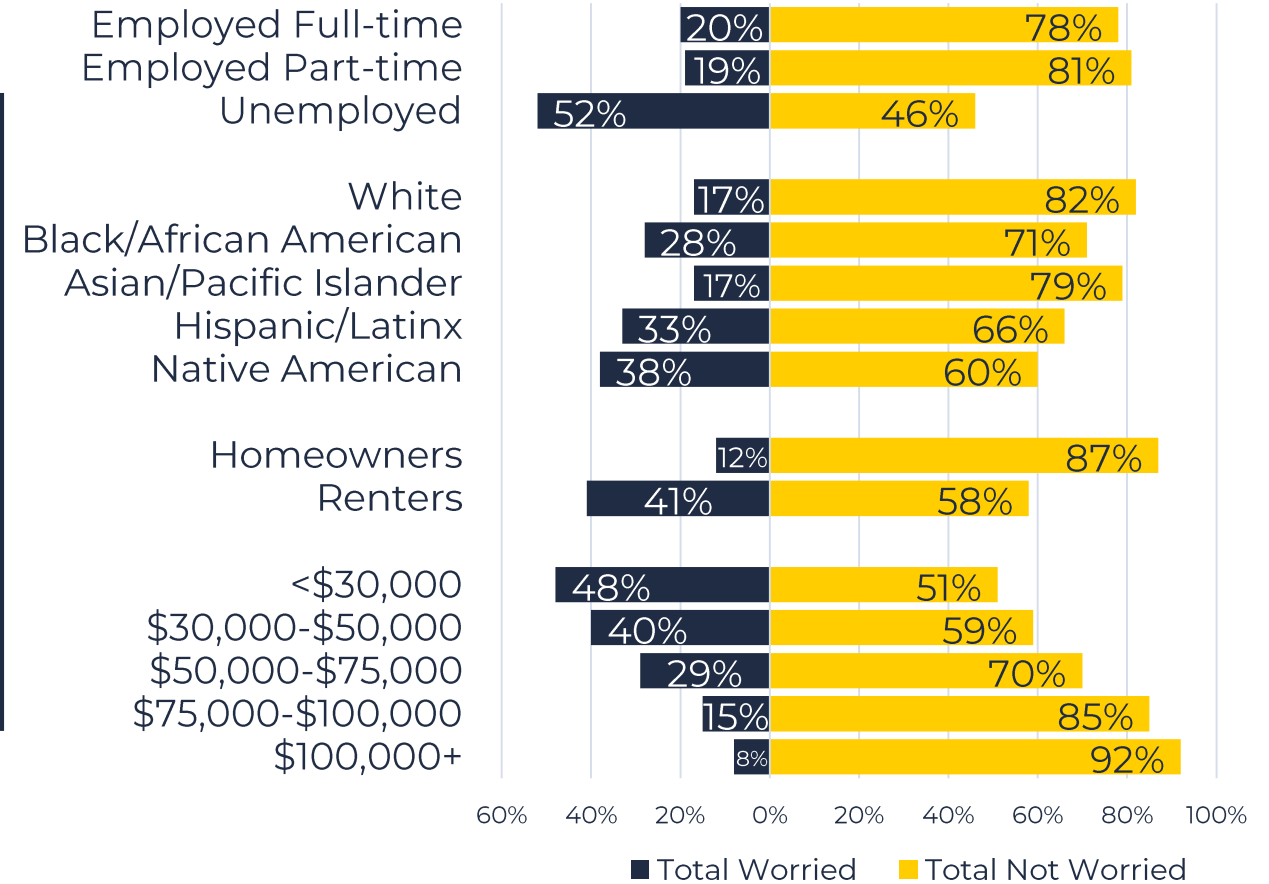
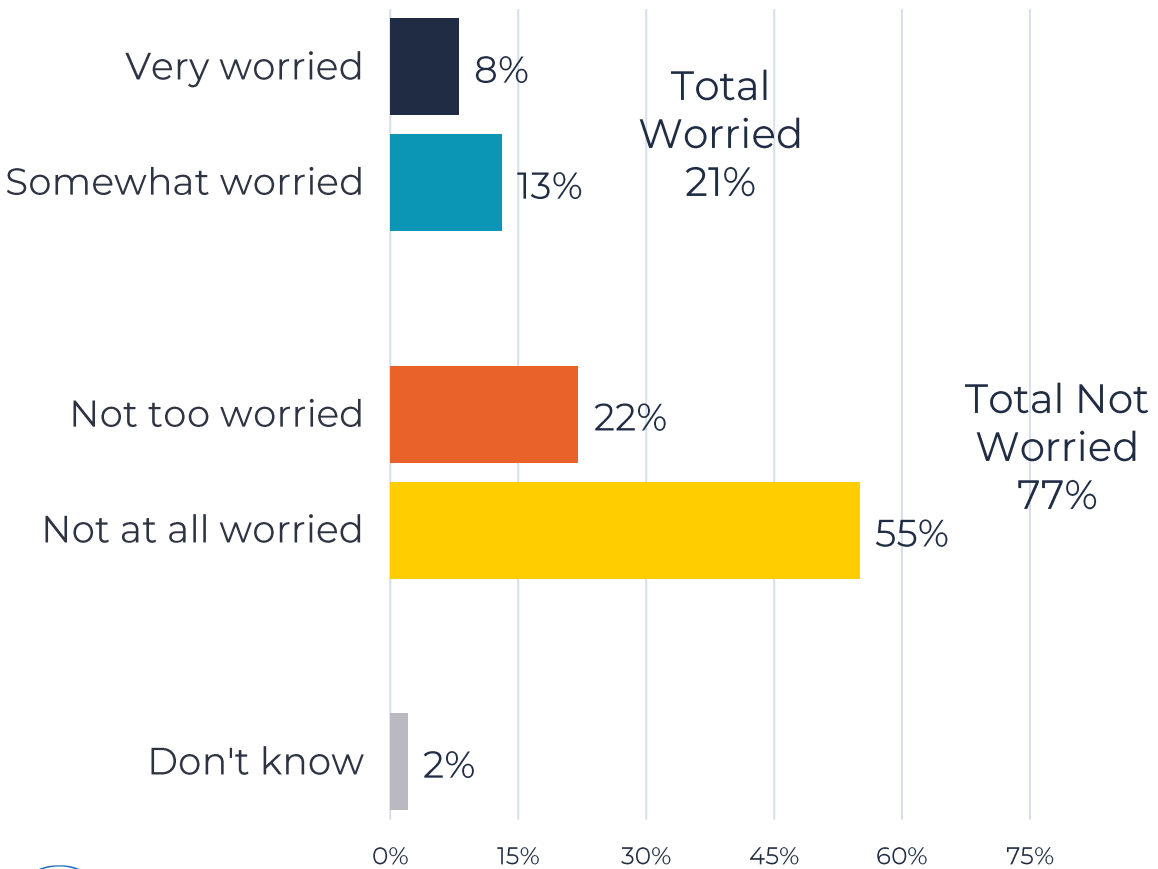
Coloradans who have lower incomes or are unemployed report that their financial status has worsened in the past year.

Would you say you are better off or worse off financially than you were a year ago, or is your financial situation about the same?



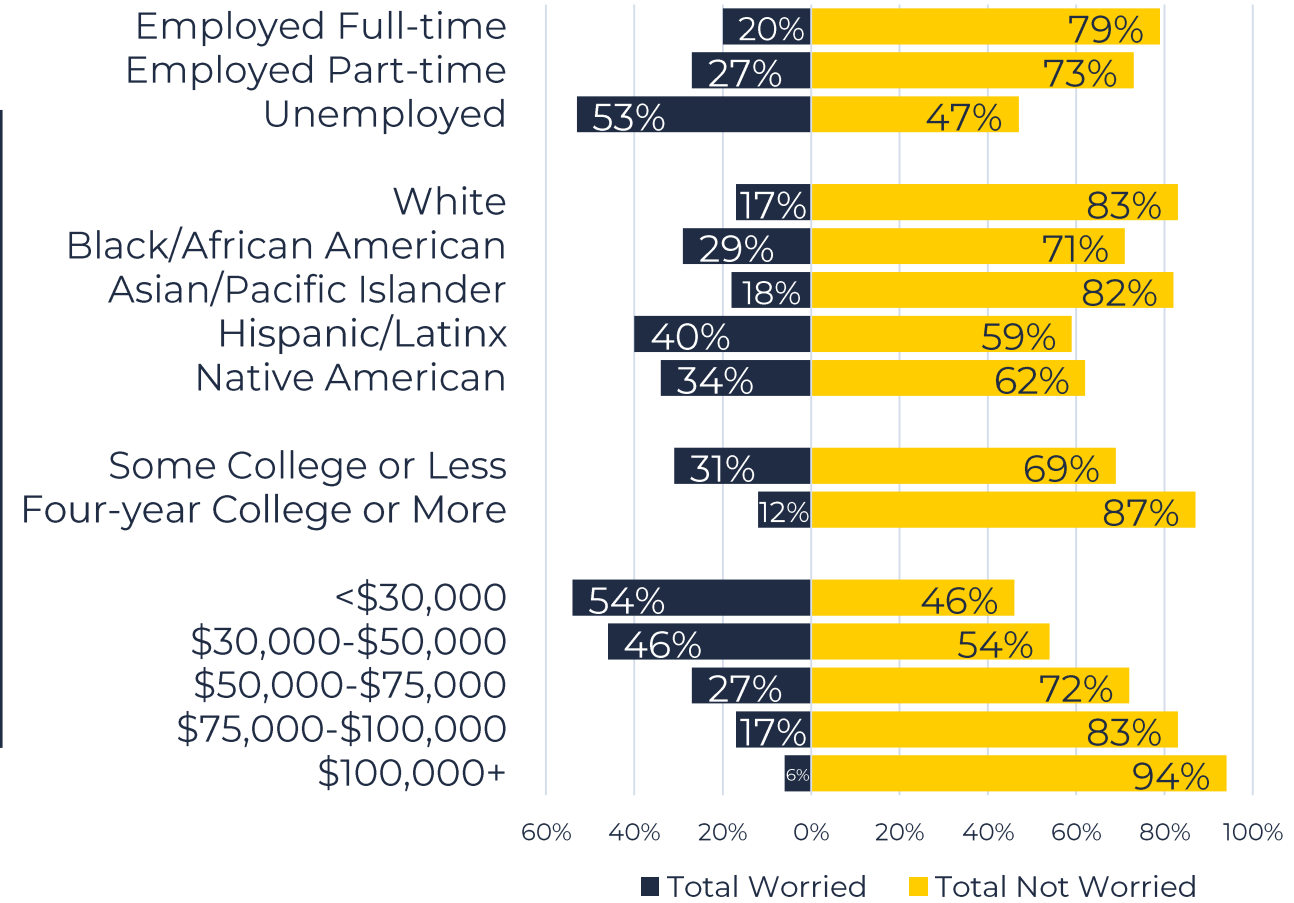
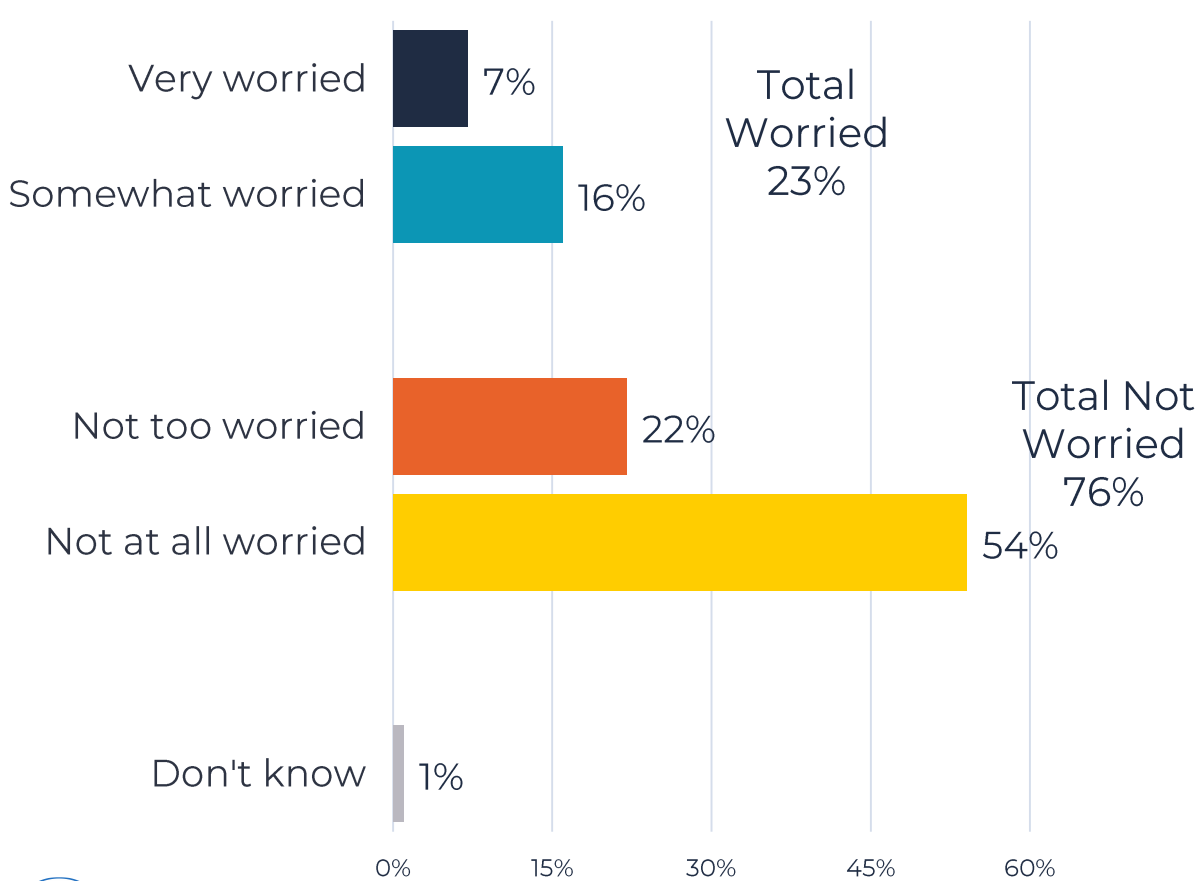
About one in five Coloradans are worried about losing their home in the next year – an anxiety with a clear correlation to income level.

Thinking ahead over the next year, how worried are you that you might lose your home because you can't afford the monthly rent or mortgage:



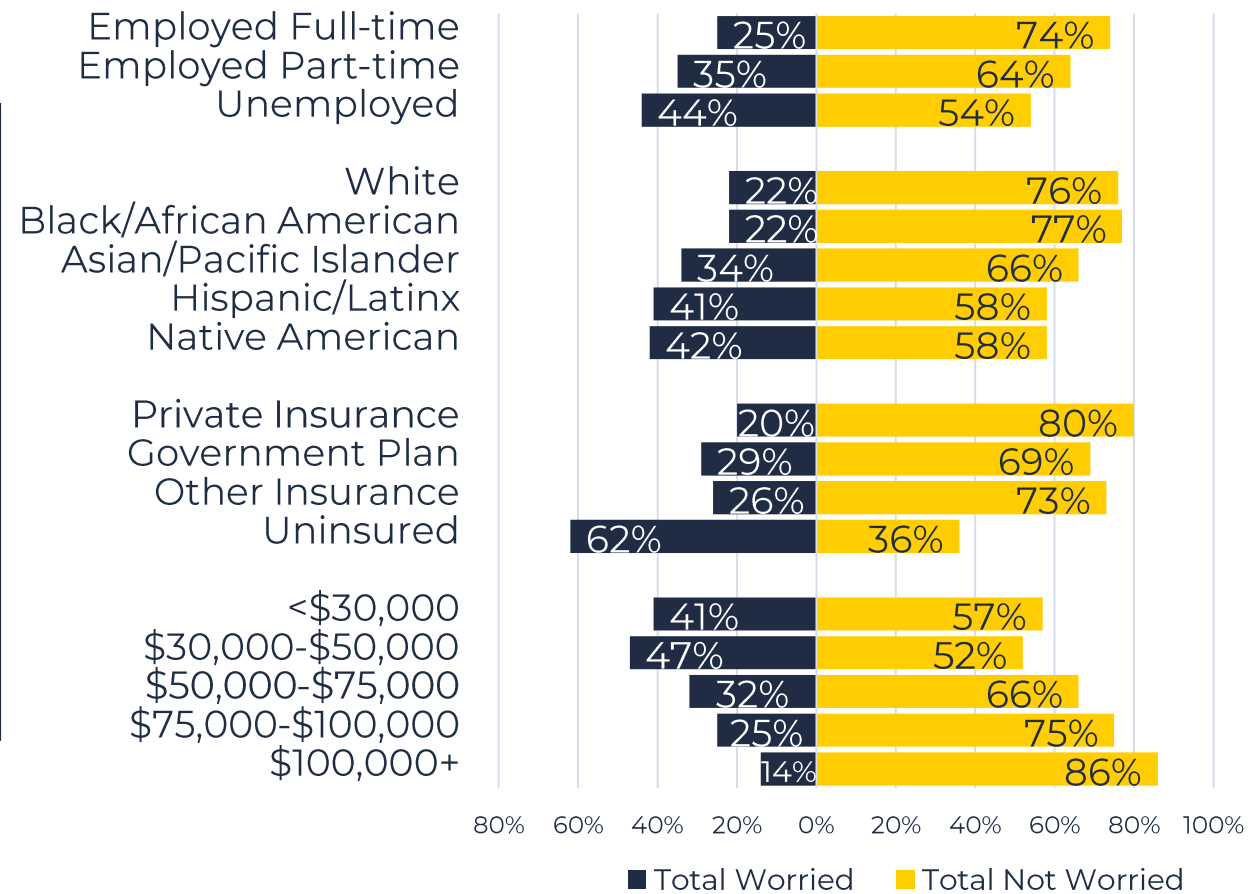
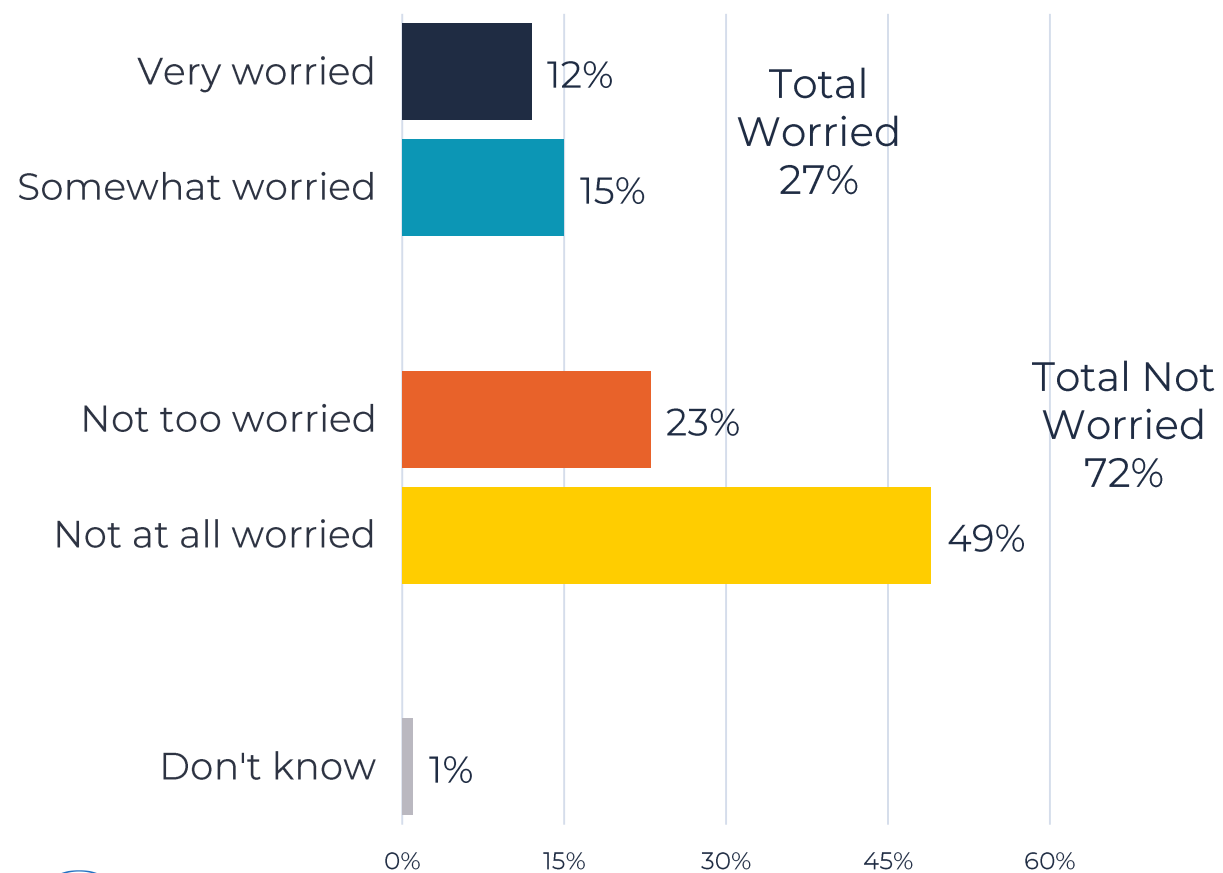
Nearly one-quarter are worried about not always being able to afford enough food for their family.

Thinking ahead over the next year, how worried are you that you might not always be able to afford enough food to feed yourself and your family:



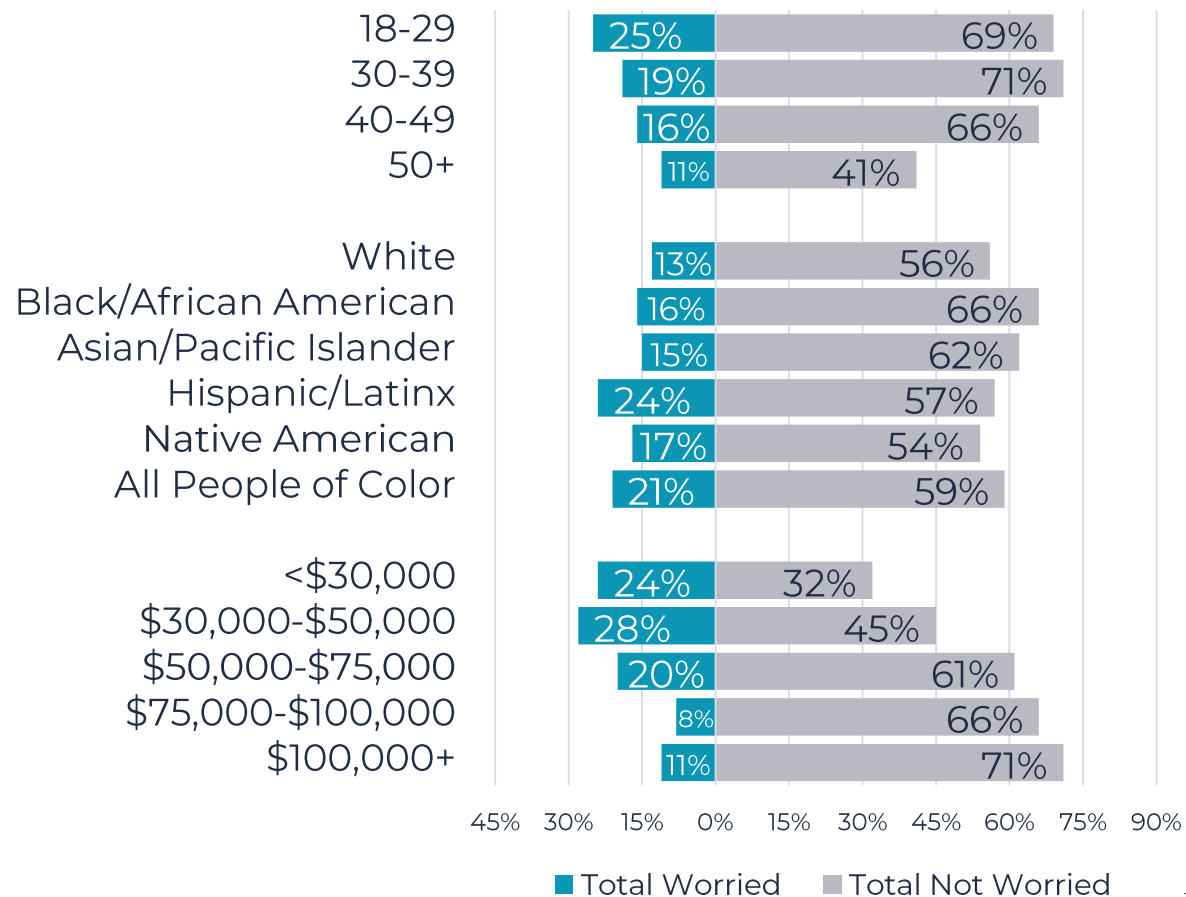
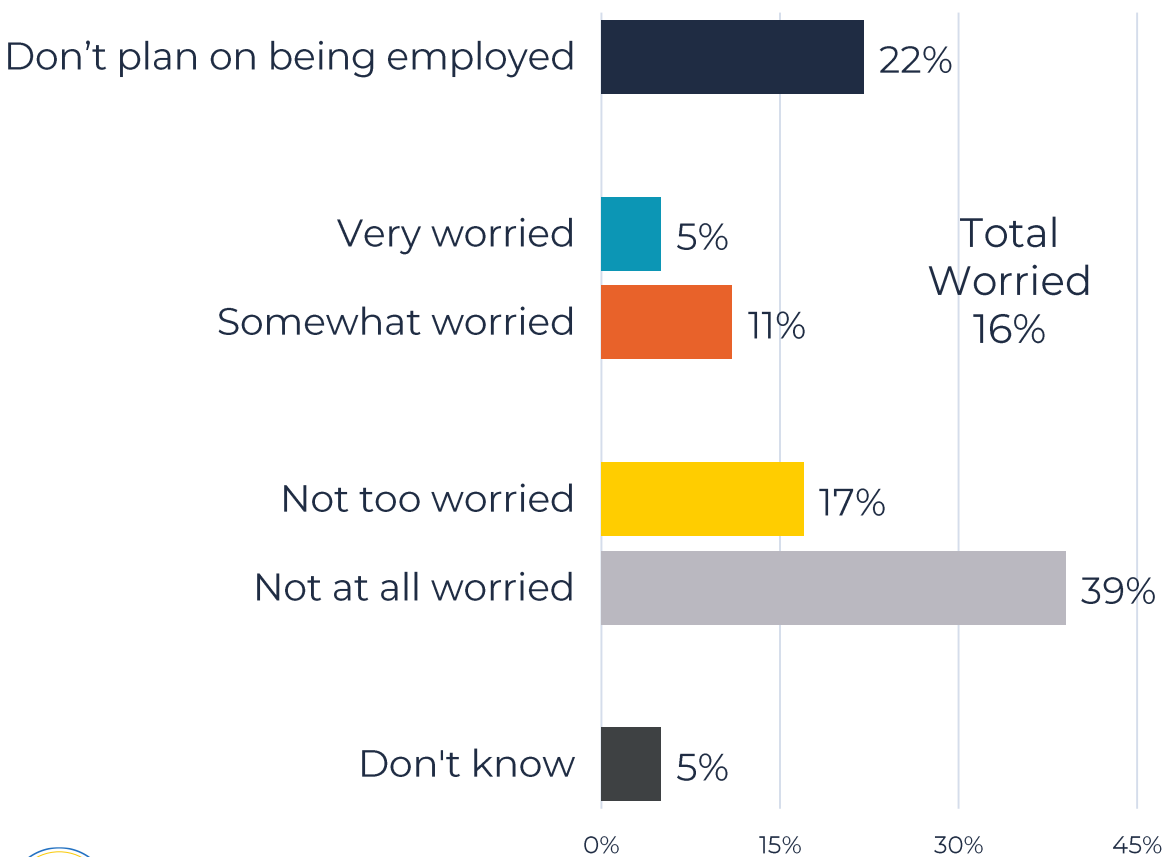
Nearly three in ten are worried that someone in their household will be without health insurance coverage over the next year.

How worried are you that you or someone else in your household will be without health insurance coverage over the next year?



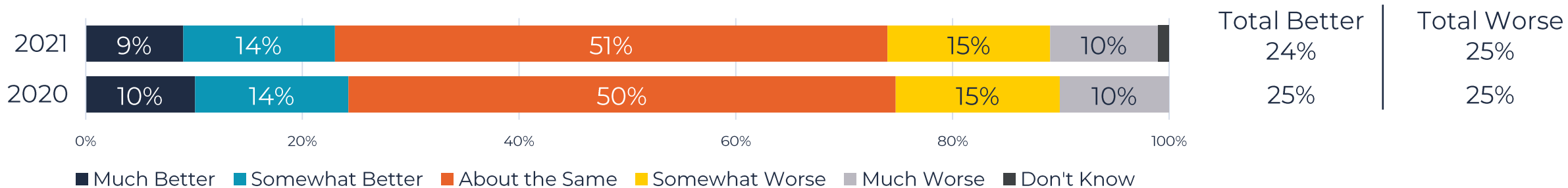
About one-in-five are worried they might not be fully employed over the next year.

Do you plan to be employed over the next year? (IF YES:) How worried are you that you might not be fully employed over the next year:

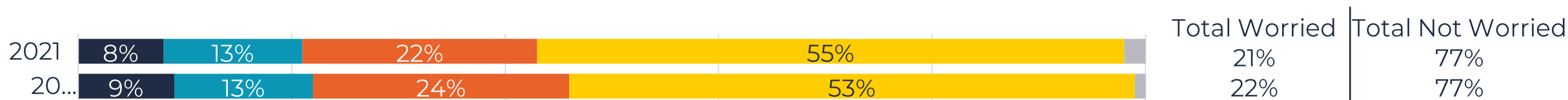


These financial perceptions are not materially different from last summer; although there is less overall concern about the condition of the economy, personal financial concerns have not shifted much.

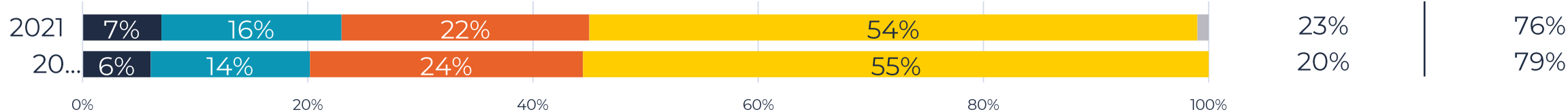
Would you say you are better off, or worse off financially than you were a year ago, or is your financial situation about the same?



Thinking ahead over the next year, how worried are you that you might lose your home because you can't afford the monthly rent or mortgage:



Thinking ahead over the next year, how worried are you that you might not always be able to afford enough food to feed yourself and your family:



Legend: ■ Very Worried ■ Somewhat Worried ■ Not Too Worried ■ Not at all Worried ■ Don't Know

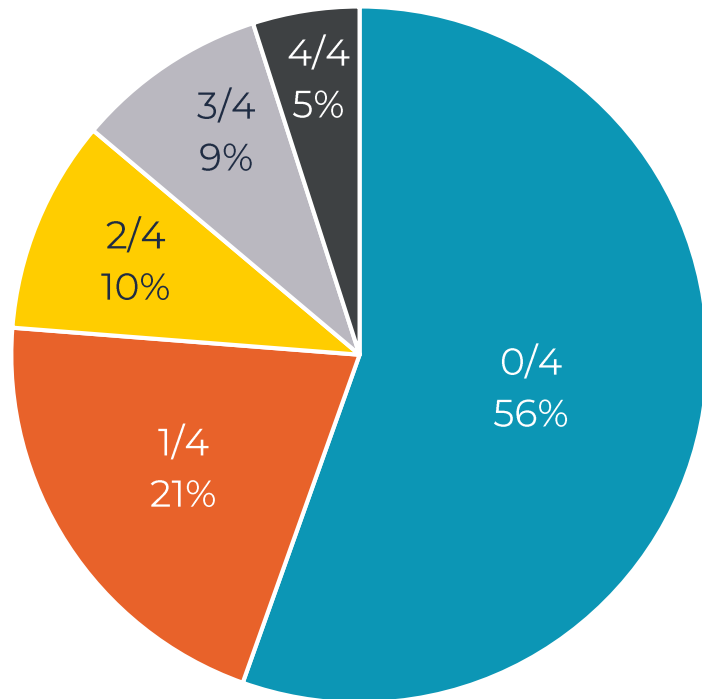
Q13, Q14 & Q16.



Nearly half of all Coloradans are worried about at least one of these four financial stresses.

Proportions of Coloradans worried about being employed, losing their home, having sufficient food and or having health insurance coverage

Proportion of Population Worried About the Four Concerns



Subgroups Most Likely to Be Worried About One or More of the Four Concerns Include:

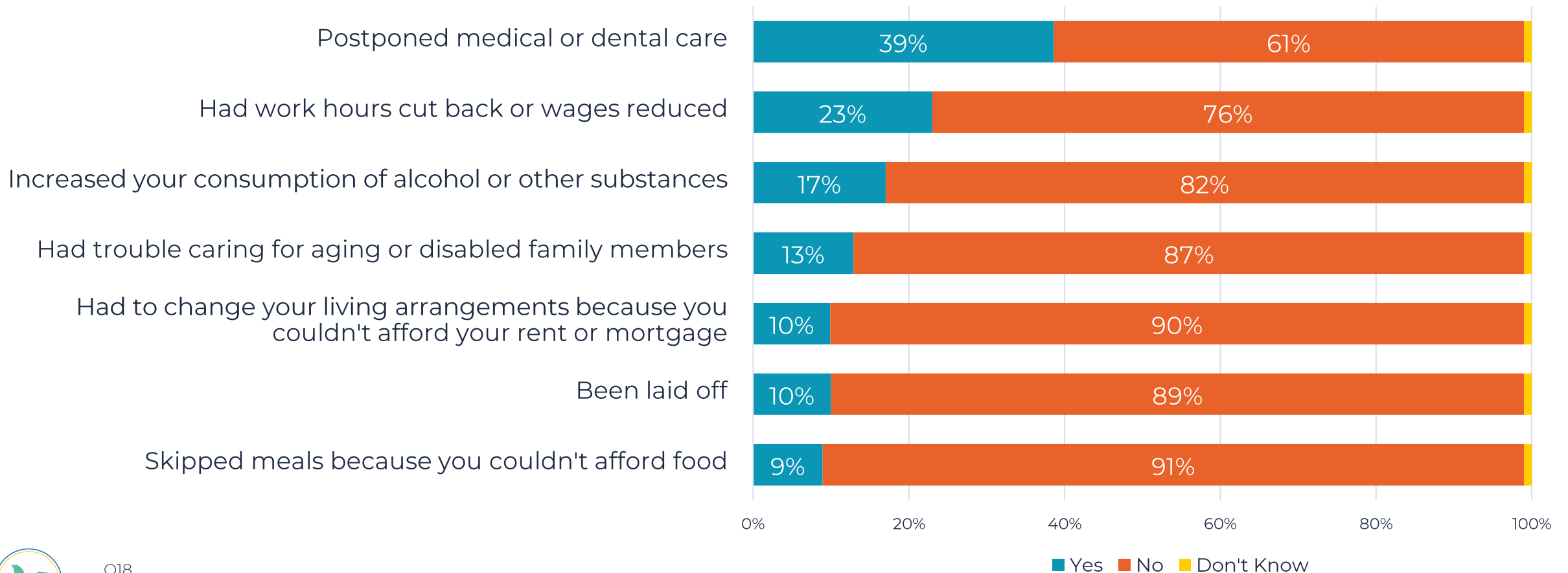
- Unemployed Coloradans
- Households with incomes under \$50,000
- Latinos
- Renters
- Women of color
- LGB*
- Live with a disability
- Not registered to vote
- Speak language other than English at home

*Lesbian, Gay, Bisexual



Sizable numbers of Coloradans have put off medical or dental care or faced reduced work hours or wages in the past year.

In the last 12 months, have you experienced any of the following?



Lower-income households are more likely to have experienced most of these challenges in the past year.

In the last 12 months, have you experienced any of the following?

(% Yes)

Experience	All	Household Income				
		<\$30,000	\$30,000-\$50,000	\$50,000-\$75,000	\$75,000-\$100,000	\$100,000+
Postponed medical or dental care	39%	52%	45%	47%	36%	30%
Had work hours cut back or wages reduced	23%	30%	36%	27%	21%	17%
Increased your consumption of alcohol or other substances	17%	18%	16%	16%	17%	19%
Had trouble caring for aging or disabled family members	13%	15%	13%	13%	13%	11%
Had to change your living arrangements because you couldn't afford your rent or mortgage	10%	25%	18%	9%	4%	4%
Been laid off	10%	18%	18%	9%	8%	8%
Skipped meals because you couldn't afford food	9%	29%	18%	9%	3%	1%



Uninsured Coloradans are much more likely to have postponed health care.

In the last 12 months, have you experienced any of the following?

(% Yes)

Experience	All	Health Insurance			
		Private	Government Plan	Other	Uninsured
Postponed medical or dental care	39%	37%	38%	40%	49%
Had work hours cut back or wages reduced	23%	19%	23%	28%	26%
Increased your consumption of alcohol or other substances	17%	19%	14%	17%	18%
Had trouble caring for aging or disabled family members	13%	11%	12%	14%	19%
Had to change your living arrangements because you couldn't afford your rent or mortgage	10%	5%	14%	7%	18%
Been laid off	10%	8%	11%	16%	14%
Skipped meals because you couldn't afford food	9%	5%	13%	7%	11%



These experiences largely cut across racial and ethnic groups within the population.

In the last 12 months, have you experienced any of the following?

(% Yes)

Experience	All	Race/Ethnicity					
		White	Black/ African American	Asian/ Pacific Islander	Hispanic/ Latinx	Native American	All People of Color
Postponed medical or dental care	39%	38%	36%	37%	40%	46%	39%
Had work hours cut back or wages reduced	23%	21%	21%	27%	26%	31%	25%
Increased your consumption of alcohol or other substances	17%	18%	15%	13%	13%	24%	15%
Had trouble caring for aging or disabled family members	13%	13%	9%	16%	11%	12%	13%
Had to change your living arrangements because you couldn't afford your rent or mortgage	10%	7%	15%	11%	15%	27%	14%
Been laid off	10%	9%	16%	14%	14%	15%	14%
Skipped meals because you couldn't afford food	9%	6%	7%	9%	14%	16%	13%



Women are more likely to report having postponed health care.

In the last 12 months, have you experienced any of the following?

(% Yes)

Experience	All	White Respondents by Gender		Respondents of Color by Gender	
		Men	Women	Men	Women
Postponed medical or dental care	39%	31%	44%	32%	45%
Had work hours cut back or wages reduced	23%	21%	21%	22%	27%
Increased your consumption of alcohol or other substances	17%	18%	19%	14%	17%
Had trouble caring for aging or disabled family members	13%	11%	14%	10%	15%
Had to change your living arrangements because you couldn't afford your rent or mortgage	10%	6%	7%	12%	16%
Been laid off	10%	9%	9%	14%	12%
Skipped meals because you couldn't afford food	9%	6%	6%	12%	14%



Those whose financial situation has worsened over the past year are also more likely to have faced a range of other challenges.

In the last 12 months, have you experienced any of the following?

(% Yes)

Experience	All	Change in Financial Situation Over Past Year		
		Better	Same	Worse
Postponed medical or dental care	39%	27%	34%	59%
Had work hours cut back or wages reduced	23%	15%	16%	43%
Increased your consumption of alcohol or other substances	17%	18%	14%	22%
Had trouble caring for aging or disabled family members	13%	8%	11%	21%
Had to change your living arrangements because you couldn't afford your rent or mortgage	10%	5%	6%	21%
Been laid off	10%	8%	6%	22%
Skipped meals because you couldn't afford food	9%	4%	5%	20%

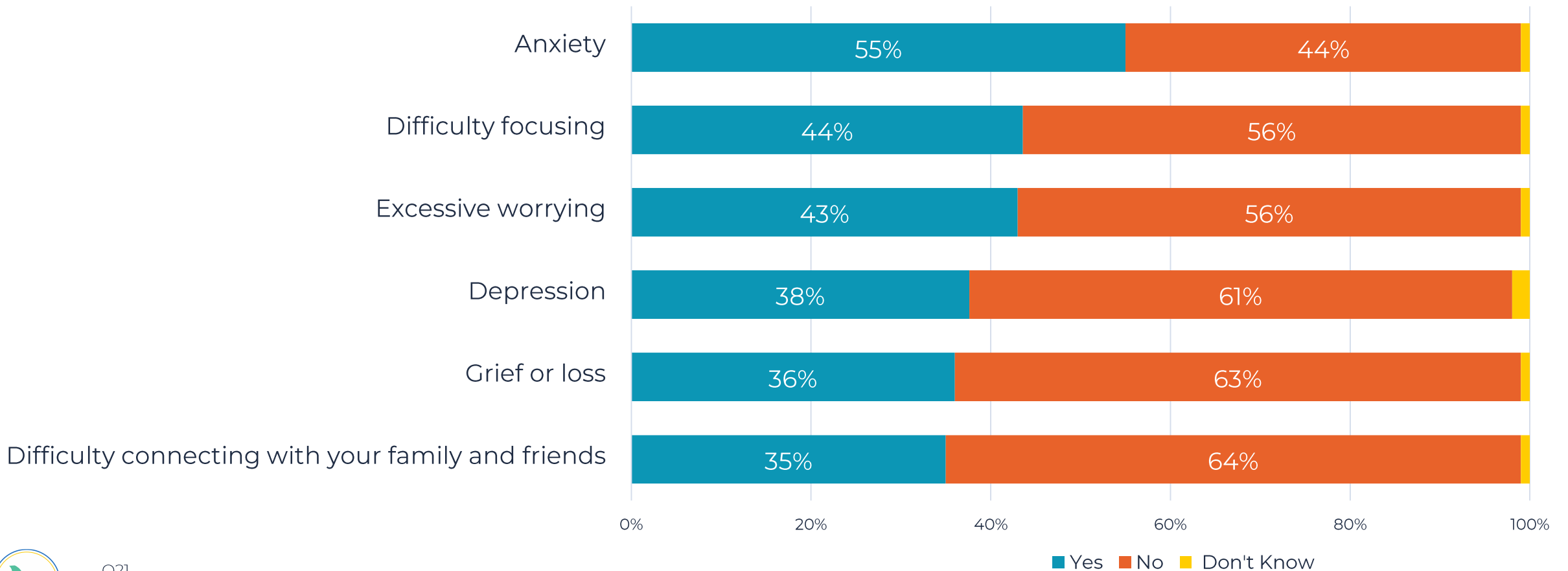


A group of people are seated around a wooden table in what appears to be a meeting or workshop. The image is dimly lit with a blue color cast. In the foreground, a person's hands are visible, holding a pen and writing in a notebook. Other people are visible in the background, some looking towards the camera and others looking away. The overall atmosphere is professional and collaborative.

Mental Health and Well-Being

Most adult Coloradans report having experienced anxiety over the last 12 months; more than one-third have faced a range of other mental health challenges.

The next few questions are about some of the mental health impacts people may have experienced in the last 12 months. Please tell me if you have experienced any of the following in the past year:



Younger female Coloradans are particularly likely to say that they have faced these challenges.

The next few questions are about some of the mental health impacts people may have experienced in the last 12 months. Please tell me if you have experienced any of the following in the past year:

(% Yes)

Mental Health Impact	All	Men by Age		Women by Age	
		Ages 18-49	Ages 50+	Ages 18-49	Ages 50+
Anxiety	55%	53%	38%	74%	59%
Difficulty focusing	44%	40%	32%	62%	46%
Excessive worrying	43%	38%	28%	62%	46%
Depression	38%	38%	24%	48%	43%
Grief or loss	36%	30%	29%	45%	47%
Difficulty connecting with your family and friends	35%	33%	25%	47%	42%



Women of color were especially likely to report experiencing excessive worrying.

The next few questions are about some of the mental health impacts people may have experienced in the last 12 months. Please tell me if you have experienced any of the following in the past year:

(% Yes)

Mental Health Impact	All	White Respondents by Gender		Respondents of Color by Gender	
		Men	Women	Men	Women
Anxiety	55%	46%	65%	46%	67%
Difficulty focusing	44%	35%	55%	37%	49%
Excessive worrying	43%	31%	50%	39%	59%
Depression	38%	30%	43%	33%	48%
Grief or loss	36%	26%	42%	34%	49%
Difficulty connecting with your family and friends	35%	30%	44%	25%	39%



To a large degree, challenges with mental health and well-being cut across racial and ethnic lines.

The next few questions are about some of the mental health impacts people may have experienced in the last 12 months. Please tell me if you have experienced any of the following in the past year:

(% Yes)

Mental Health Impact	All	Race/Ethnicity					
		White	Black/ African American	Asian/ Pacific Islander	Hispanic/ Latinx	Native American	All People of Color
Anxiety	55%	55%	50%	63%	56%	66%	56%
Difficulty focusing	44%	45%	39%	49%	42%	53%	43%
Excessive worrying	43%	40%	37%	53%	50%	58%	49%
Depression	38%	36%	35%	39%	41%	49%	41%
Grief or loss	36%	34%	45%	44%	40%	55%	41%
Difficulty connecting with your family and friends	35%	37%	24%	35%	31%	41%	32%



LGB Coloradans and those who live with a disability also report higher rates of mental health strains over the past year.

The next few questions are about some of the mental health impacts people may have experienced in the last 12 months. Please tell me if you have experienced any of the following in the past year:

(% Yes)

Mental Health Impact	All	Sexual Orientation		Live with Disability	
		Heterosexual	LGB*	Yes	No
Anxiety	55%	54%	74%	71%	52%
Difficulty focusing	44%	42%	67%	56%	41%
Excessive worrying	43%	41%	67%	56%	39%
Depression	38%	36%	64%	57%	33%
Grief or loss	36%	35%	55%	53%	32%
Difficulty connecting with your family and friends	35%	33%	59%	48%	32%



Those who have faced financial disruptions are more likely to also report mental health challenges.

The next few questions are about some of the mental health impacts people may have experienced in the last 12 months. Please tell me if you have experienced any of the following in the past year:

(% Yes)

Mental Health Impact	All	Change in Financial Situation Over Past Year			Been Laid Off	
		Better	Same	Worse	Yes	No
Anxiety	55%	50%	52%	69%	73%	53%
Difficulty focusing	44%	40%	39%	58%	61%	42%
Excessive worrying	43%	37%	38%	57%	60%	41%
Depression	38%	34%	32%	52%	51%	36%
Grief or loss	36%	32%	32%	49%	50%	34%
Difficulty connecting with your family and friends	35%	28%	31%	51%	49%	34%



There is also a notable correlation between household income level and experiencing challenges with mental health and well-being.

The next few questions are about some of the mental health impacts people may have experienced in the last 12 months. Please tell me if you have experienced any of the following in the past year:

(% Yes)

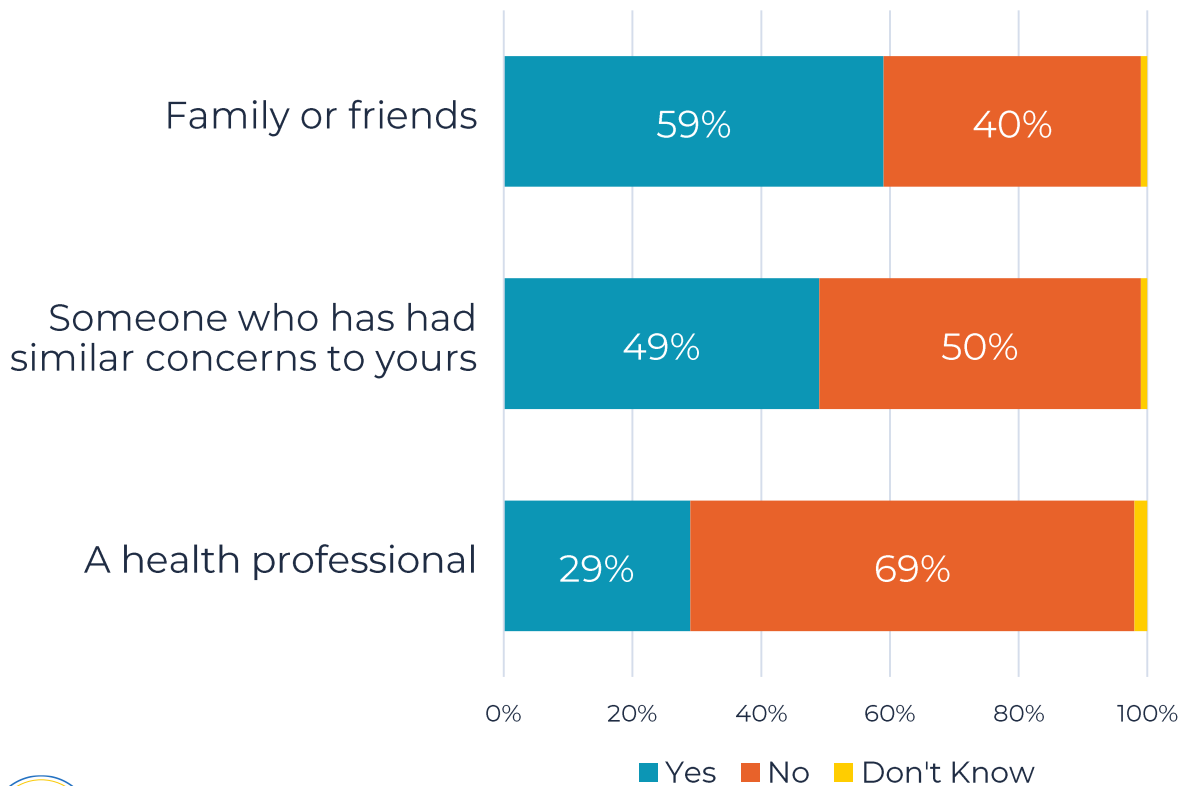
Mental Health Impact	All	Household Income				
		<\$30,000	\$30,000-\$50,000	\$50,000-\$75,000	\$75,000-\$100,000	\$100,000+
Anxiety	55%	67%	60%	55%	60%	51%
Difficulty focusing	44%	54%	49%	44%	46%	44%
Excessive worrying	43%	56%	52%	37%	43%	40%
Depression	38%	53%	43%	38%	38%	34%
Grief or loss	36%	44%	40%	34%	33%	36%
Difficulty connecting with your family and friends	35%	46%	41%	33%	30%	35%



While most Coloradans discussed mental health challenges with family and friends, only about three in ten spoke with a health professional.

Did you talk to any of the following about your mental health and well-being in the last 12 months?

% Who Spoke with a Source of Support



(Subgroups Most Likely to Have Spoken with a Mental Health Professional)

Demographic Group	% of Sample
LGB	53%
Live with a Disability	50%
Identify as "Very Liberal"	48%
Women Ages 18-49	47%
Unemployed/Employed Part-Time	38%
Democrats Ages 18-49	41%
College-Educated Women	41%

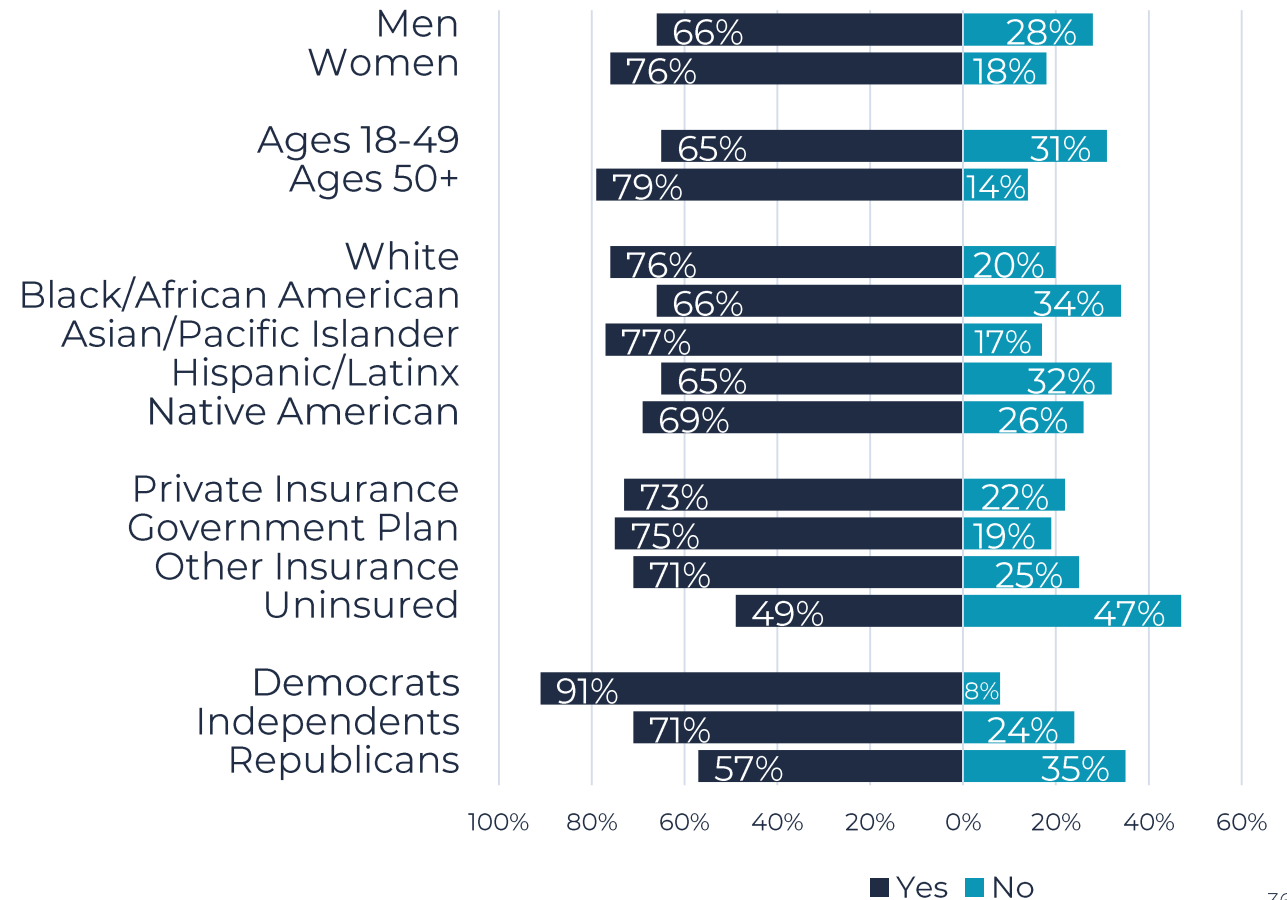
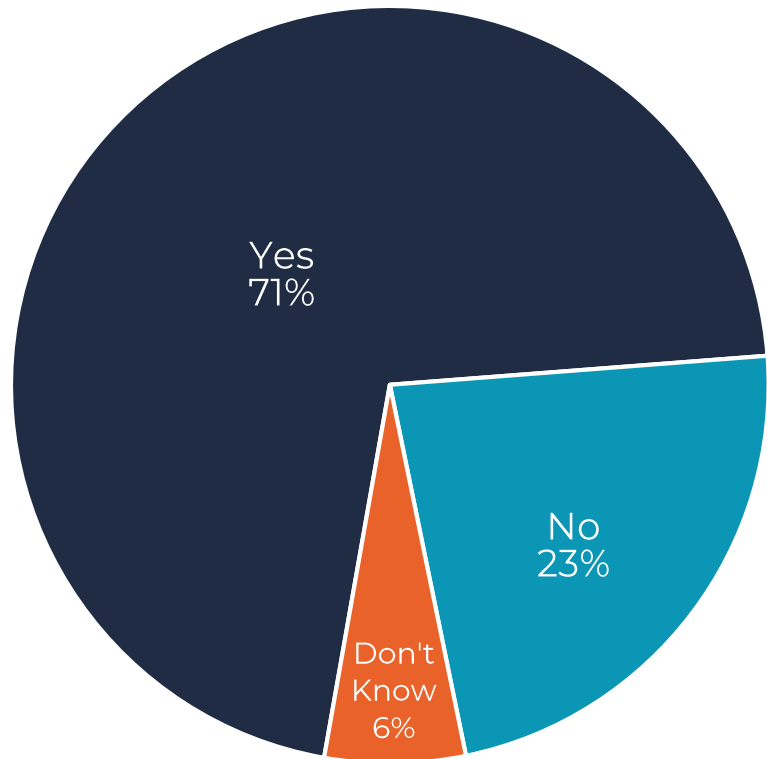


A group of people are seated around a table in a meeting. In the foreground, a person's hands are visible, holding a pen and writing in a notebook. The background shows other people, some looking towards the camera and others looking away. The overall scene is dimly lit with a blue tint.

COVID-19 Vaccination

Over two-thirds of Coloradans report having gotten at least one dose of the vaccine; the starkest differences in vaccination rates are partisan.

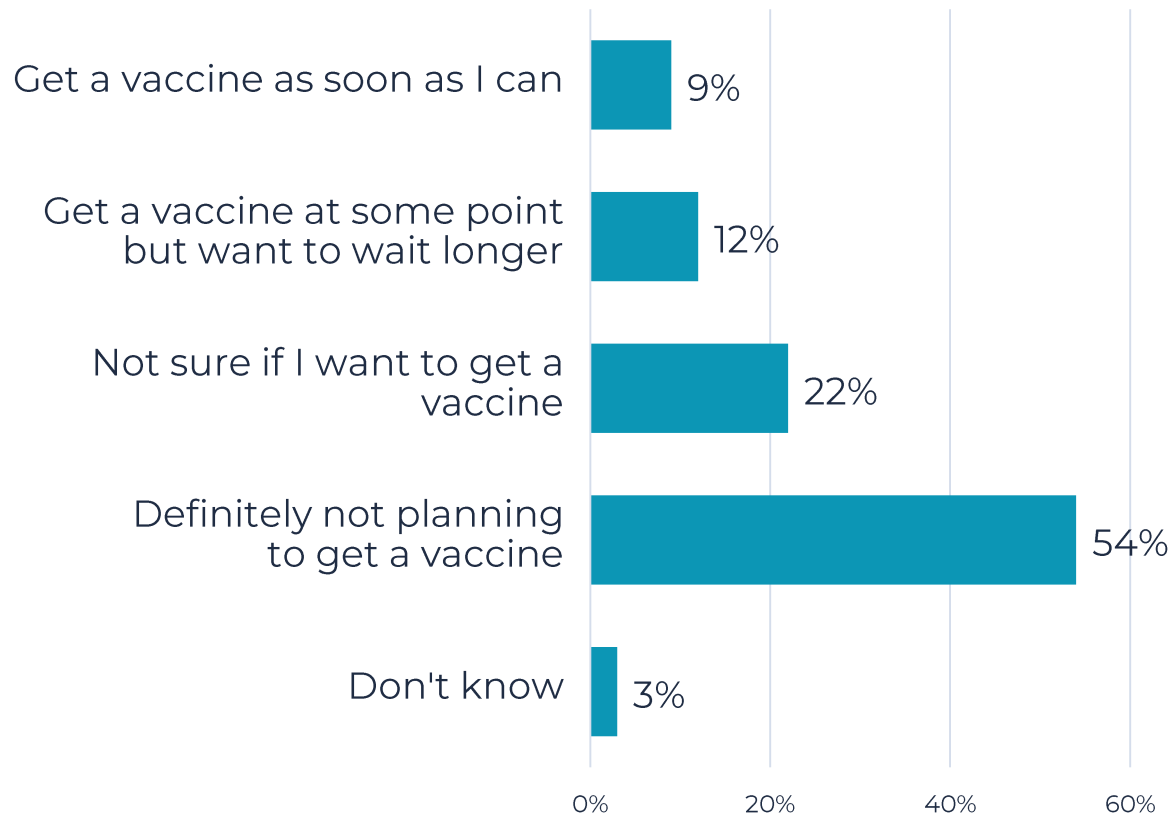
Have you gotten at least one dose of a COVID-19 vaccine?



Most unvaccinated Coloradans say that they “definitely” will not get the vaccine.

Which of the following best describes your plans regarding getting a COVID-19 vaccine?

(Asked of Unvaccinated Respondents; n=585)



Subgroups of Unvaccinated Coloradans Most Likely to Say They Will “Definitely Not” Get Vaccinated

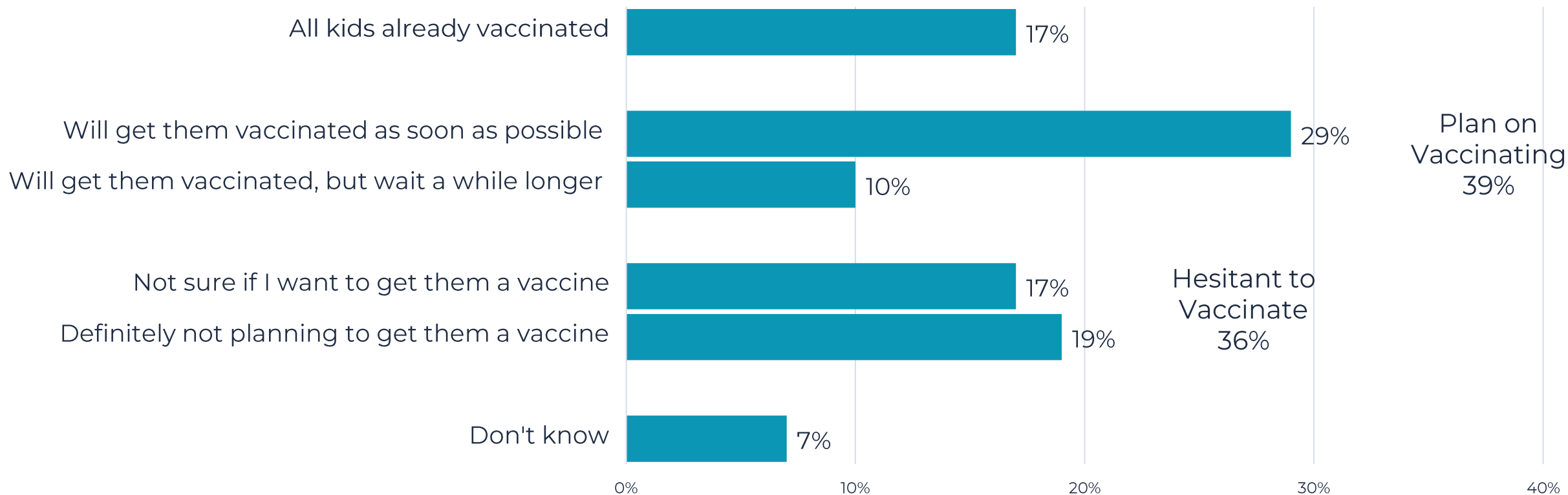
Subgroup	% Who Will “Definitely Not” Get Vaccinated
Identify as “Very Conservative”	75%
Attend Religious Services Regularly	68%
Republicans	66%
Uninsured	63%
White	62%
Men Without a 4-Year College Degree	58%



Almost one in five parents/guardians have already vaccinated all their children, but nearly two in five are hesitant.

When an FDA-authorized COVID-19 vaccine becomes available to your **[child/children]**, which of the following best describes your plans regarding getting your **[child/children]** a COVID-19 vaccine?

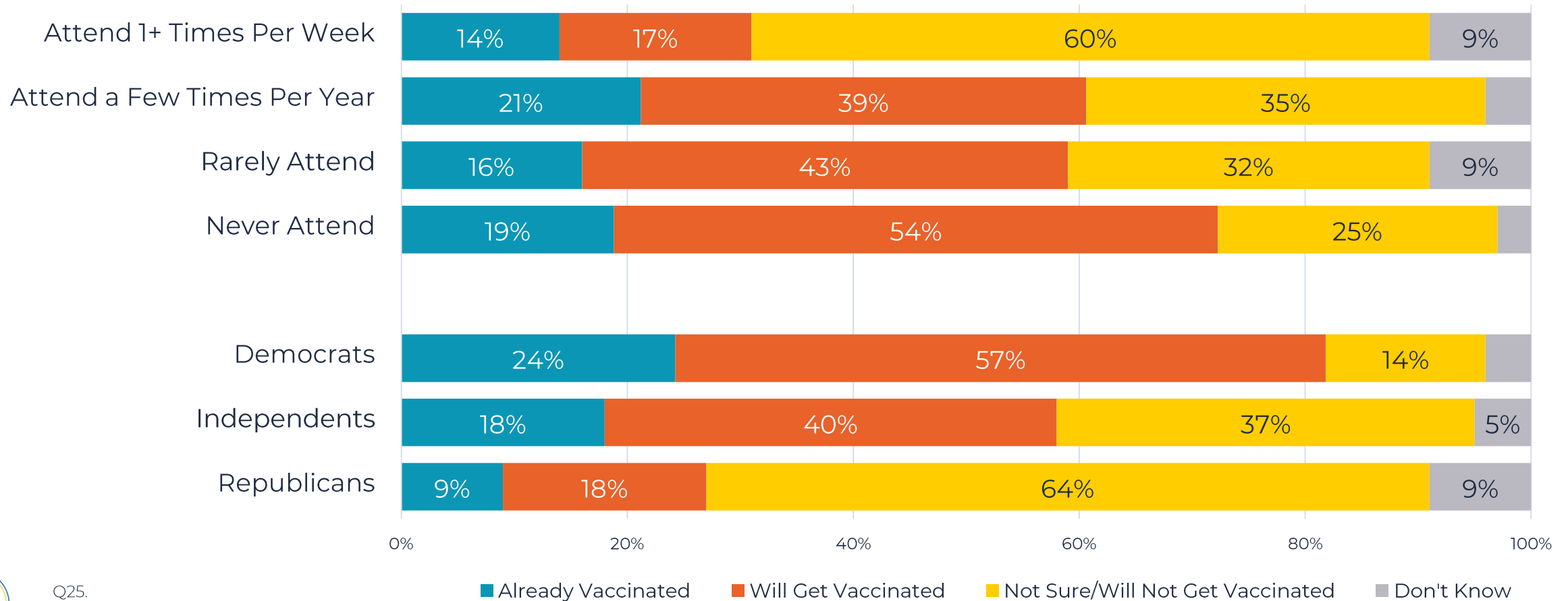
(Asked of Parents of Children Under 18; n=728)



Democratic and more secular parents are more likely to get their children vaccinated.

When an FDA-authorized COVID-19 vaccine becomes available to your **[child/children]**, which of the following best describes your plans regarding getting your **[child/children]** a COVID-19 vaccine?

(Religious Service Attendance and Party)

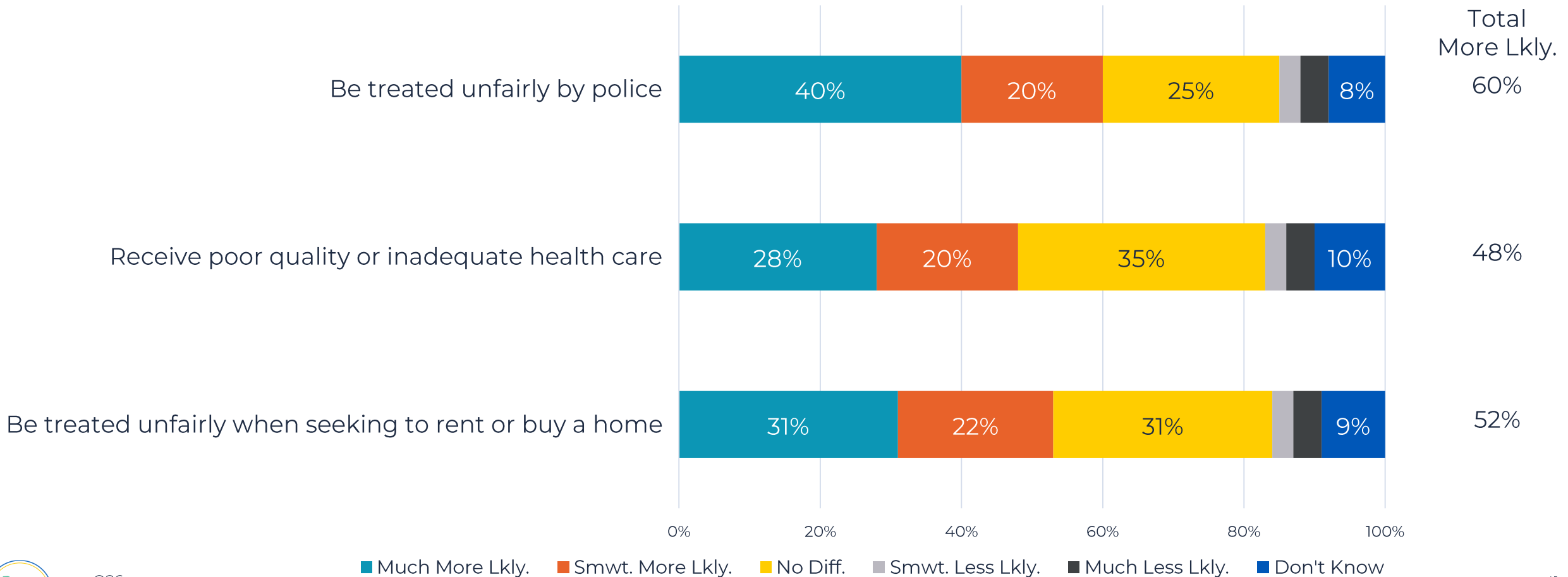


A photograph of a group of people in a meeting, with a blue overlay. The text 'Racial Equity' is centered in white. In the foreground, a person's hands are visible, writing in a notebook with a pen. Other people are seated around a table, some looking towards the camera and others looking away. The background is slightly blurred, showing more people and what appears to be a window or light source.

Racial Equity

About six-in-ten believe Black Coloradans are more likely to be treated unfairly by police.

Compared to White Coloradans, do you think Black Coloradans are more likely or less likely to experience the following items? If you think there is no difference you can tell me that too.



Coloradans of color are more likely than whites to perceive that Black Coloradans disproportionately face these experiences.

Compared to White Coloradans, do you think Black Coloradans are more likely or less likely to experience the following items? If you think there is no difference you can tell me that too.

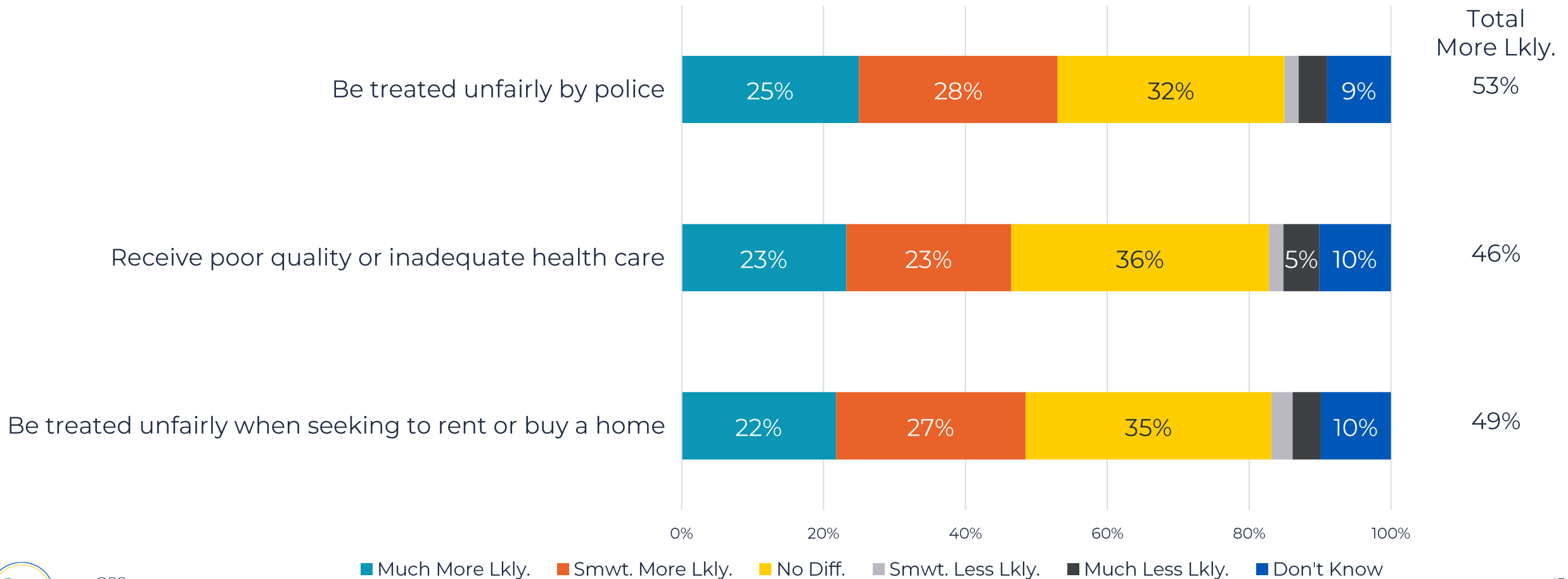
(% Total More Likely)

Experience	All	Race/Ethnicity					
		White	Black/ African American	Asian/ Pacific Islander	Hispanic/ Latinx	Native American	All People of Color
Be treated unfairly by police	60%	59%	69%	72%	69%	69%	68%
Receive poor quality or inadequate health care	48%	46%	59%	67%	55%	55%	57%
Be treated unfairly when seeking to rent or buy a home	52%	50%	65%	68%	60%	62%	61%



Only slightly over half believe Hispanic Coloradans are more likely to be treated unfairly by police.

Compared to White Coloradans, do you think Hispanic Coloradans are more likely or less likely to experience the following items? If you think there is no difference you can tell me that too.



Again, Coloradans of color are more likely to perceive that Hispanic Coloradans will face unfair treatment.

Compared to White Coloradans, do you think Hispanic Coloradans are more likely or less likely to experience the following items? If you think there is no difference you can tell me that too.

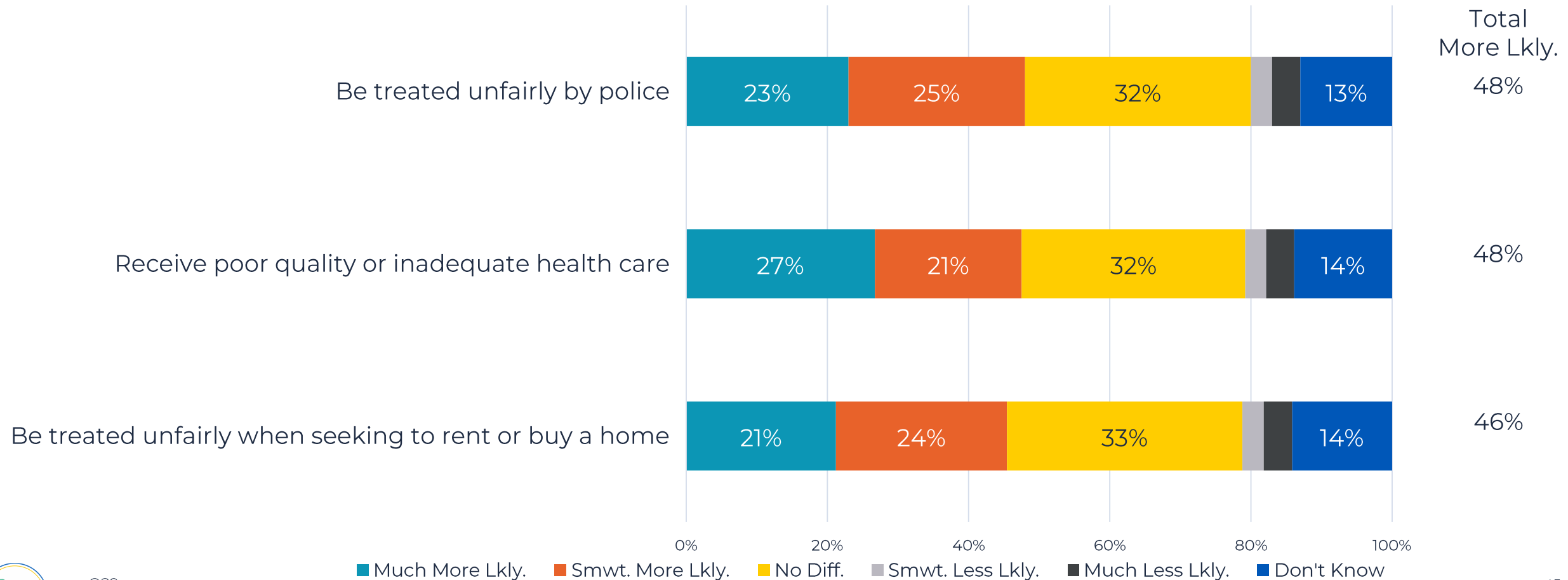
(% Total More Likely)

Experience	All	Race/Ethnicity					All People of Color
		White	Black/ African American	Asian/ Pacific Islander	Hispanic/ Latinx	Native American	
Be treated unfairly by police	53%	51%	64%	70%	62%	60%	62%
Receive poor quality or inadequate health care	46%	44%	57%	62%	51%	50%	53%
Be treated unfairly when seeking to rent or buy a home	49%	47%	56%	65%	55%	56%	56%



Almost half believe Indigenous or Native American Coloradans are more likely to be treated unfairly, but to a lesser degree than Hispanic or Black Coloradans.

Compared to White Coloradans, do you think Indigenous or Native American Coloradans are more likely or less likely to experience the following items? If you think there is no difference you can tell me that too.



Again, that perception is more prevalent among Coloradans of color.

Compared to White Coloradans, do you think Indigenous or Native American Coloradans are more likely or less likely to experience the following items? If you think there is no difference you can tell me that too.

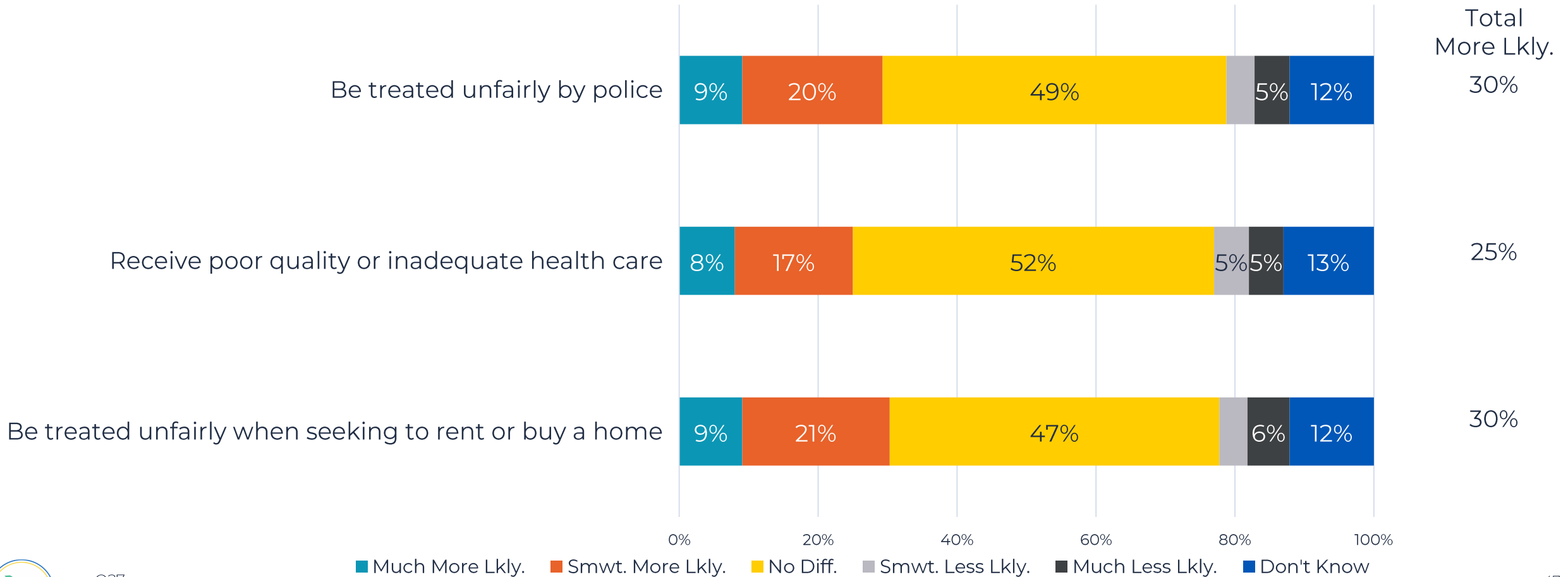
(% Total More Likely)

Experience	All	Race/Ethnicity					
		White	Black/ African American	Asian/ Pacific Islander	Hispanic/ Latinx	Native American	<i>All People of Color</i>
Be treated unfairly by police	48%	47%	56%	60%	53%	62%	54%
Receive poor quality or inadequate health care	48%	48%	48%	65%	50%	59%	52%
Be treated unfairly when seeking to rent or buy a home	46%	45%	52%	59%	47%	63%	49%



Coloradans are much less likely to believe that Asian American Coloradans will face unfair treatment.

Compared to White Coloradans, do you think Asian American Coloradans are more likely or less likely to experience the following items? If you think there is no difference you can tell me that too.



Asian American Coloradans, however, do perceive that they are more likely to face unfair treatment.

Compared to White Coloradans, do you think Asian American Coloradans are more likely or less likely to experience the following items? If you think there is no difference you can tell me that too.

(% Total More Likely)

Experience	All	Race/Ethnicity					
		White	Black/ African American	Asian/ Pacific Islander	Hispanic/ Latinx	Native American	All People of Color
Be treated unfairly by police	30%	27%	33%	45%	36%	44%	37%
Receive poor quality or inadequate health care	25%	23%	29%	48%	29%	39%	32%
Be treated unfairly when seeking to rent or buy a home	30%	29%	30%	49%	35%	46%	36%



There has been little change since last year in the perceptions that Coloradans of color experience unfair treatment in policing or health care.

Compared to White Coloradans, do you think (Black Coloradans/Asian American Coloradans/Hispanic Coloradans) are more likely or less likely to experience the following items? If you think there is no difference you can tell me that too.

(% Total More Likely)

Black Coloradans	2020	2021	Difference
Be treated unfairly by police	58%	60%	+2%
Receive poor quality or inadequate health care	49%	48%	-1%
Asian American Coloradans			
Receive poor quality or inadequate health care	22%	25%	+3%
Be treated unfairly by police	28%	30%	+2%
Hispanic Coloradans			
Be treated unfairly by police	51%	53%	+2%
Receive poor quality or inadequate health care	50%	46%	-4%



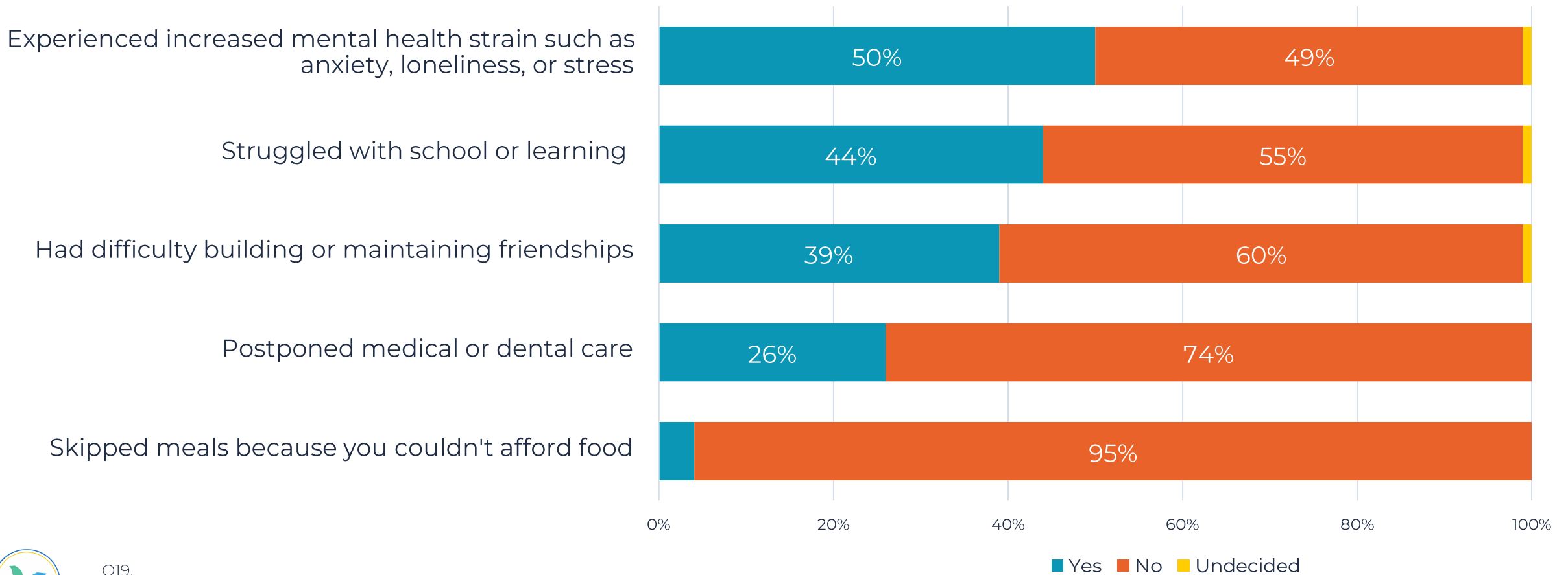
A group of people are seated around a wooden table in what appears to be a meeting or workshop. The scene is dimly lit with a blue color cast. In the foreground, a person's hands are visible, holding a pen and writing in a notebook. Other people are visible in the background, some looking towards the camera and others looking away. The overall atmosphere is professional and collaborative.

Parenting and Child Care

About half of Colorado parents report that their children have experienced increased mental health strains in the past year.

In the last 12 months, have your children experienced any of the following?

(Asked of Parents of Children Under 18; n=728)



White and Native American parents are somewhat more likely to report that their children have experienced mental health strains.

In the last 12 months, have your children experienced any of the following?

(% Yes)

Mental Health Impact	All	Race/Ethnicity					
		White	Black/ African American	Asian/ Pacific Islander	Hispanic/ Latinx	Native American	All People of Color
Experienced increased mental health strain such as anxiety, loneliness, or stress	50%	55%	32%	27%	41%	63%	41%
Struggled with school or learning	44%	47%	19%	28%	43%	36%	39%
Had difficulty building or maintaining friendships	39%	42%	36%	29%	33%	43%	33%
Postponed medical or dental care	26%	26%	15%	54%	21%	15%	23%
Skipped meals because you couldn't afford food	4%	3%	2%	4%	9%	5%	6%



Mothers are more likely to report their children having experienced mental health strain than are fathers.

In the last 12 months, have your children experienced any of the following?

(% Yes)

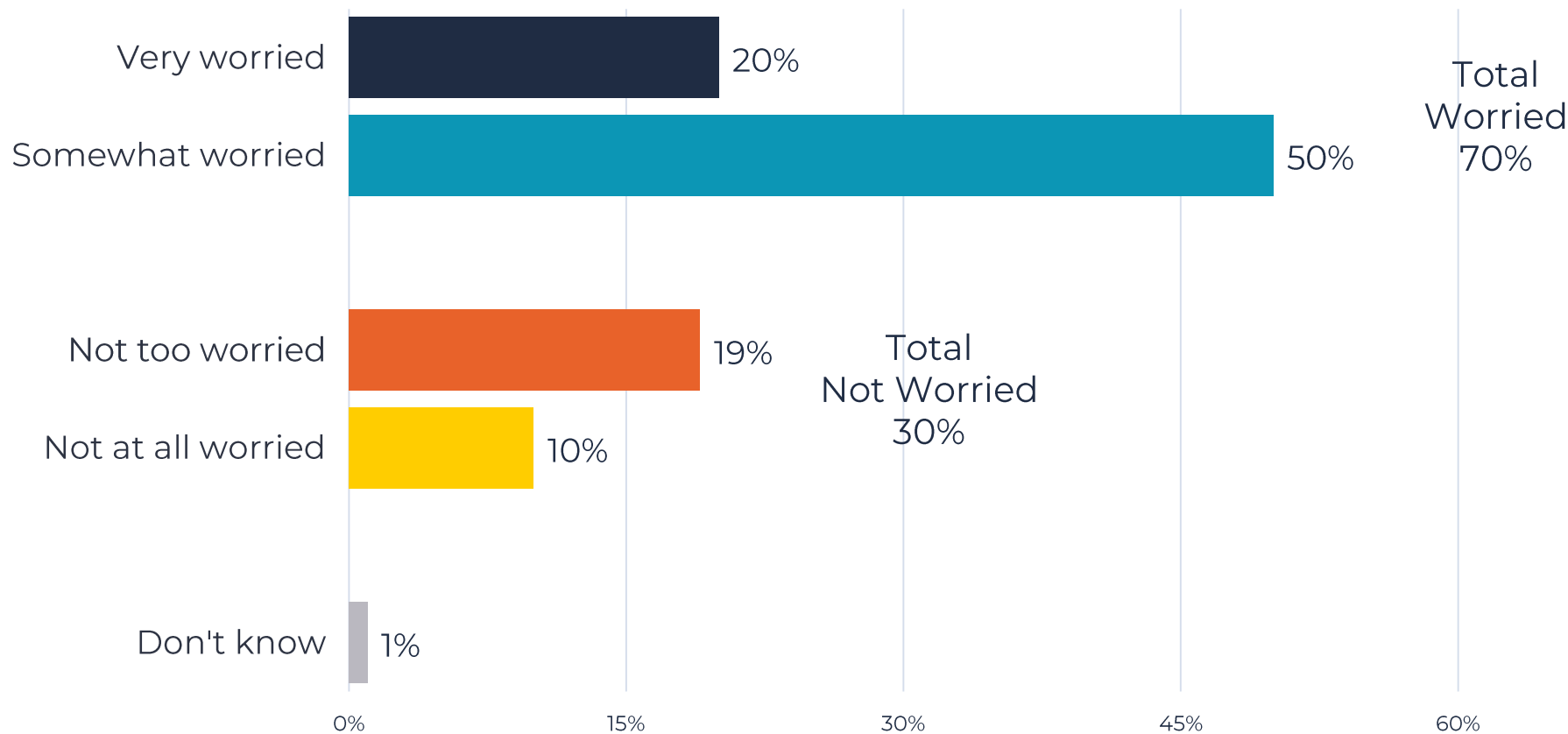
Mental Health Impact	All	Parent Gender	
		Men	Women
Experienced increased mental health strain such as anxiety, loneliness, or stress	50%	42%	57%
Struggled with school or learning	44%	40%	48%
Had difficulty building or maintaining friendships	39%	37%	40%
Postponed medical or dental care	26%	17%	32%
Skipped meals because you couldn't afford food	4%	5%	4%



Seven-in-ten parents of kids who have experienced a challenge are worried about the impact it has on their children's health and well-being.

You indicated that one of your children had experienced some challenges in the last 12 months. How worried are you about the impact that those experiences are having on your child's health and well-being:

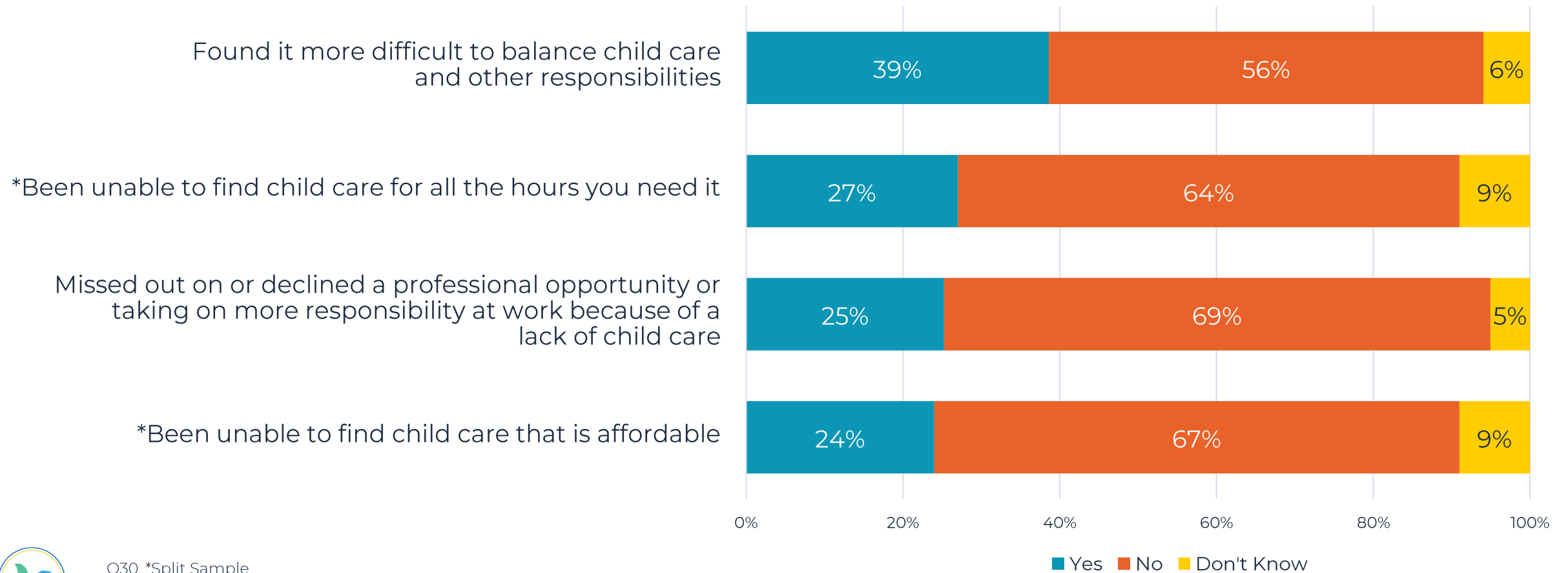
(Asked of Parents of Children Under 18 Who Have Experienced at Least One Listed Challenge; n=495)



Two in five parents have found it more difficult to balance child care and other responsibilities.

Please tell me if you have had any of the following experiences related to child care at any point in the last 12 months:

(Asked Only of Parents of Children Under Age 18)



This is particularly true for mothers and parents of children under 5 years old.

Please tell me if you have had any of the following experiences related to child care at any point in the last 12 months:

(% Yes)

Experience	All	Parent Gender		Children's Age	
		Men	Women	Ages 5 & Under	School-Aged
Found it more difficult to balance child care and other responsibilities	39%	35%	42%	52%	37%
*Been unable to find child care for all the hours you need it	27%	22%	31%	37%	23%
Missed out on or declined a professional opportunity or taking on more responsibility at work because of a lack of child care	25%	16%	34%	36%	23%
*Been unable to find child care that is affordable	24%	26%	22%	44%	20%



Parents of color have also faced more challenges related to child care than have white parents.

Please tell me if you have had any of the following experiences related to child care at any point in the last 12 months:

(% Yes)

Experience	All	Race/Ethnicity					
		White	Black/ African American	Asian/ Pacific Islander	Hispanic/ Latinx	Native American	All People of Color
Found it more difficult to balance child care and other responsibilities	39%	37%	40%	43%	40%	28%	42%
*Been unable to find child care for all the hours you need it	27%	26%	27%	35%	23%	25%	28%
Missed out on or declined a professional opportunity or taking on more responsibility at work because of a lack of child care	25%	22%	36%	39%	29%	13%	32%
*Been unable to find child care that is affordable	24%	19%	32%	52%	27%	19%	31%



In particular, mothers of color report the most frequent challenges with securing child care.

Please tell me if you have had any of the following experiences related to child care at any point in the last 12 months:

(% Yes)

Experience	All	White Parents by Gender		Parents of Color by Gender	
		Men	Women	Men	Women
Found it more difficult to balance child care and other responsibilities	39%	35%	39%	35%	47%
*Been unable to find child care for all the hours you need it	27%	28%	26%	13%	37%
Missed out on or declined a professional opportunity or taking on more responsibility at work because of a lack of child care	25%	14%	28%	18%	42%
*Been unable to find child care that is affordable	24%	21%	18%	32%	31%



More affluent households are less likely to experience challenges with child care.

Please tell me if you have had any of the following experiences related to child care at any point in the last 12 months:

(% Yes)

Experience	All	Household Income				
		<\$30,000	\$30,000-\$50,000	\$50,000-\$75,000	\$75,000-\$100,000	\$100,000+
Found it more difficult to balance child care and other responsibilities	39%	50%	51%	43%	31%	36%
*Been unable to find child care for all the hours you need it	27%	13%	38%	40%	11%	27%
Missed out on or declined a professional opportunity or taking on more responsibility at work because of a lack of child care	25%	44%	45%	33%	22%	16%
*Been unable to find child care that is affordable	24%	52%	47%	21%	26%	14%



Parents whose financial situation has worsened in the past year have also faced more challenges with child care.

Please tell me if you have had any of the following experiences related to child care at any point in the last 12 months:

(% Yes)

Experience	All	Change in Financial Situation Over the Past Year		
		Better	Same	Worse
Found it more difficult to balance child care and other responsibilities	39%	32%	31%	57%
*Been unable to find child care for all the hours you need it	27%	21%	23%	38%
Missed out on or declined a professional opportunity or taking on more responsibility at work because of a lack of child care	25%	14%	20%	43%
*Been unable to find child care that is affordable	24%	18%	14%	46%

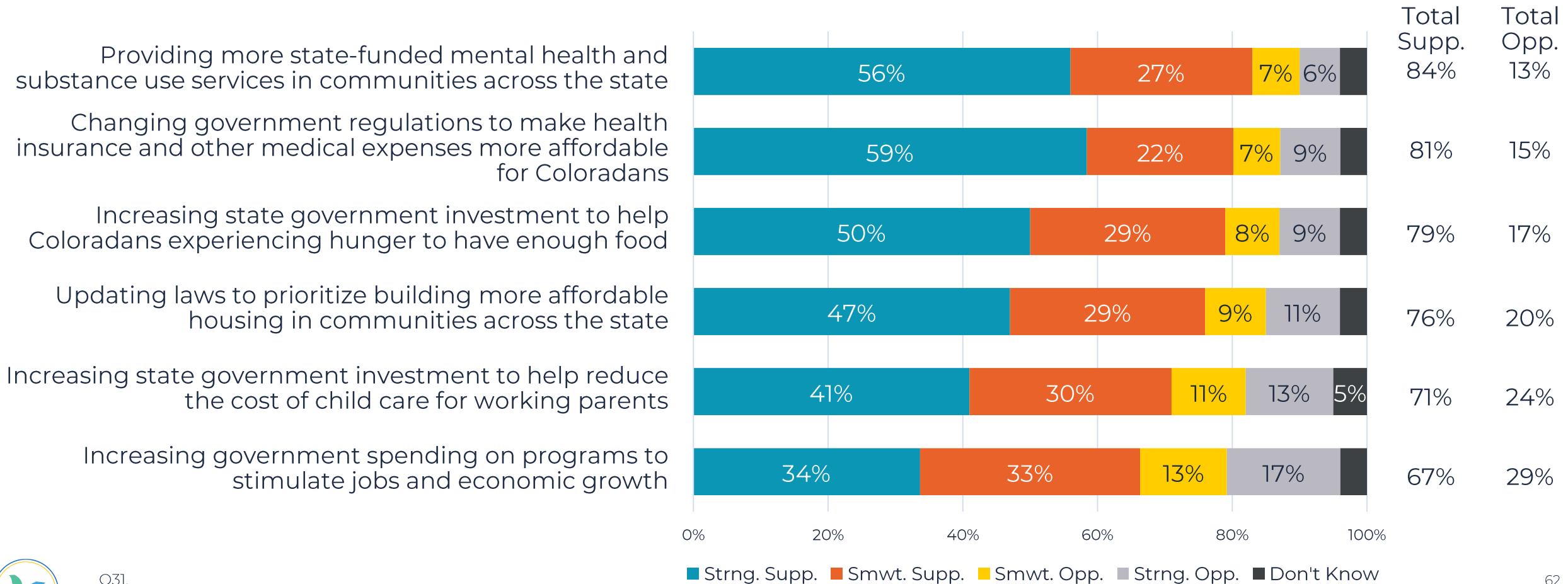


A group of people are seated around a table in a meeting. In the foreground, a person's hands are visible, holding a pen and writing in a notebook. The background shows other participants, some looking towards the camera and others looking away. The overall scene is dimly lit, with a blueish tint.

Policy Responses

Over eight-in-ten Coloradans would support increased State government spending on mental health and substance use services.

I am going to read you a list of policies that may be considered by Colorado state government. Please tell me whether each sounds like something you would support or oppose.



Support for each of these policies is much stronger among Democrats.

I am going to read you a list of policies that may be considered by Colorado state government. Please tell me whether each sounds like something you would support or oppose.

(% Strongly Support)

Policy	All	Party		
		Democrats	Independents	Republicans
Changing government regulations to make health insurance and other medical expenses more affordable for Coloradans	59%	84%	60%	31%
Providing more state-funded mental health and substance use services in communities across the state	56%	80%	56%	33%
Increasing state government investment to help Coloradans experiencing hunger to have enough food	50%	77%	46%	28%
Updating laws to prioritize building more affordable housing in communities across the state	47%	73%	44%	27%
Increasing state government investment to help reduce the cost of child care for working parents	41%	67%	37%	17%
Increasing government spending on programs to stimulate jobs and economic growth	34%	53%	30%	18%



Support also tends to be more intense in the Denver Metro region.

I am going to read you a list of policies that may be considered by Colorado state government. Please tell me whether each sounds like something you would support or oppose.

(% Strongly Support)

Policy	All	Region				
		Eastern Plains	Colorado Springs/Pueblo	Larimer/Weld	Denver Metro	Western Slope
Changing government regulations to make health insurance and other medical expenses more affordable for Coloradans	59%	55%	56%	53%	64%	50%
Providing more state-funded mental health and substance use services in communities across the state	56%	32%	49%	59%	61%	48%
Increasing state government investment to help Coloradans experiencing hunger to have enough food	50%	36%	41%	46%	56%	43%
Updating laws to prioritize building more affordable housing in communities across the state	47%	34%	45%	41%	52%	39%
Increasing state government investment to help reduce the cost of child care for working parents	41%	29%	34%	33%	47%	37%
Increasing government spending on programs to stimulate jobs and economic growth	34%	30%	28%	26%	39%	29%



CONTACT US

KYLE ROJAS LEGLEITER
Senior Director of Policy and
Advocacy
Colorado Health Foundation
klegleiter@coloradohealth.org

JACE WOODRUM
Senior Officer of Public Opinion
Insights
Colorado Health Foundation
jwoodrum@coloradohealth.org

**THANK
YOU**

