



The Colorado Health Foundation™

# Pulse: The Colorado Health Foundation Poll Brand Guidelines

## Primary Logo



## Reverse Logo



## Lockup Options with CHF Logos



The Colorado Health Foundation™



Use version without tagline when smaller scale is needed



[copulsepoll.org](http://copulsepoll.org)



## Primary Color Palette



C73 M28 Y1 K0  
R57 G152 B208  
HEX: #3998D0



C65 M0 Y61 K0  
R86 G190 B139  
HEX: #56BE8B



C90 M78 Y47 K48  
R31 G44 B67  
HEX: #1F2C43



C100 M52 Y0 K0  
R0 G87 B184  
HEX: #0057B8

## Secondary



C70 M61 Y58 K46  
R62 G65 B67  
HEX: #3E4143



C0 M14 Y100 K0  
R255 G205 B0  
HEX: #FFCD00



C10 M100 Y80 K15  
R167 G25 B48  
HEX: #A71930

## Tertiary

Use when additional colors are needed in charts/graphs



C80 M25 Y22 K  
R12 G150 B181  
HEX: #0C96B5



C42 M0 Y100 K0  
R161 G205 B58  
HEX: #A1CD3A



C4 M76 Y96 K0  
R232 G98 B42  
HEX: #E8622A



C4 M49 Y100 K0  
R238 G147 B34  
HEX: #EE9322

## Primary Font

**Headline: Montserrat Bold**

Subhead: Montserrat Regular

## Secondary

**Subhead: Helvetica Neue Condensed Bold**

## Figures

**Montserrat Black: 00%**  
**Helvetica Neue Condensed Bold: 00%**

## Iconography

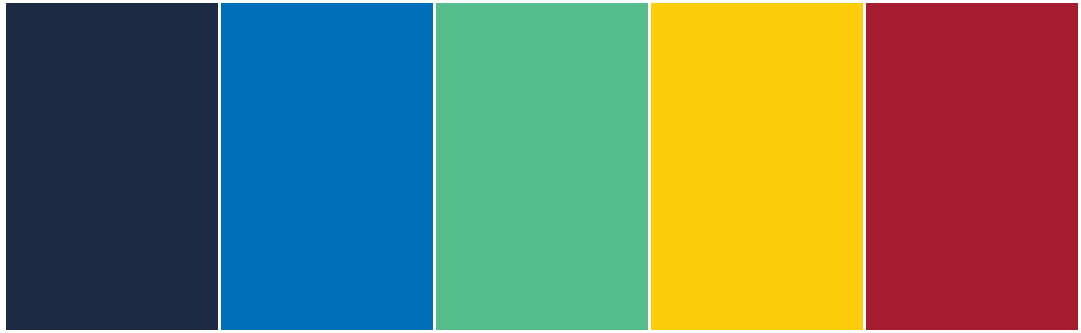


## Logo Element



## Data Visualization Color Use

Use colors in this order when creating graphs or charts.



HEX: #1F2C43

HEX: #0057B8

HEX: #56BE8B

HEX: #FFCD00

HEX: #A71930

Additional colors can be used when there are over 5 data points.



HEX: #3E4143

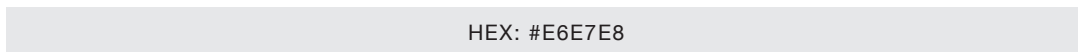
HEX: #0C96B5

HEX: #A1CD3A

HEX: #EE9322

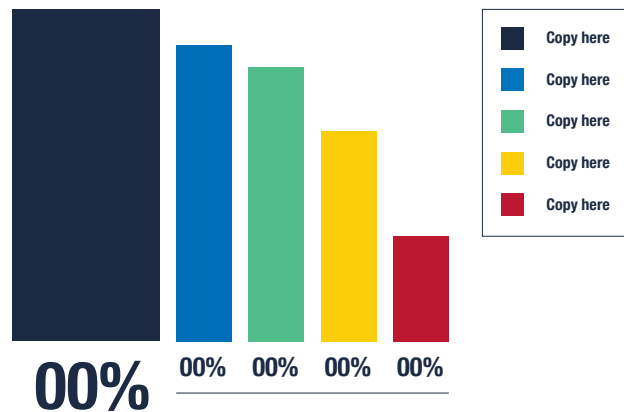
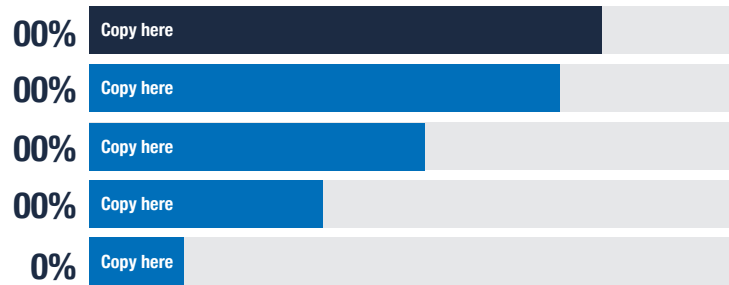
HEX: #E8622A

Gray can be used to indicate an overall range.

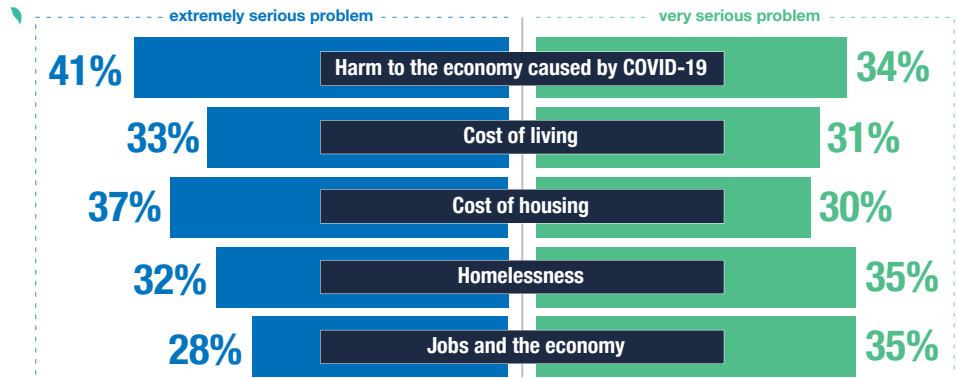
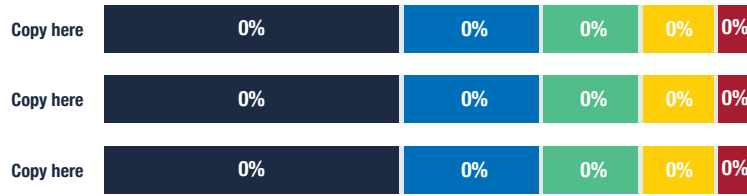


HEX: #E6E7E8

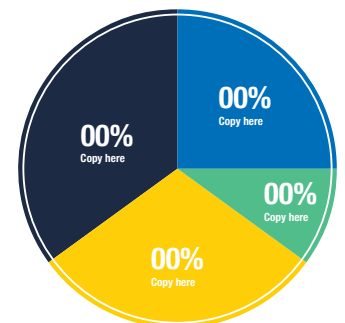
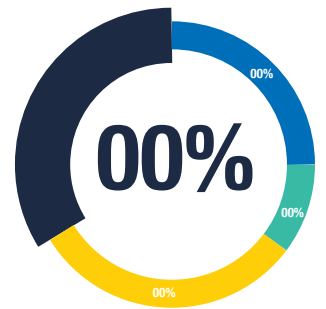
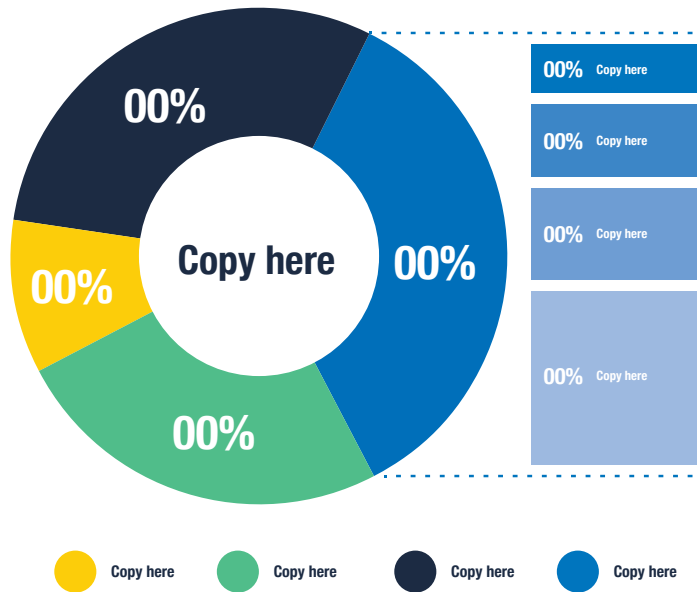
## Example of calling out data



## Bar Chart Examples



## Pie Chart Examples



## Photography Use

Screen overlay  
#1f2c43

Adjust opacity  
as needed



80%

60%

40%

20%

## Example

60% opacity

